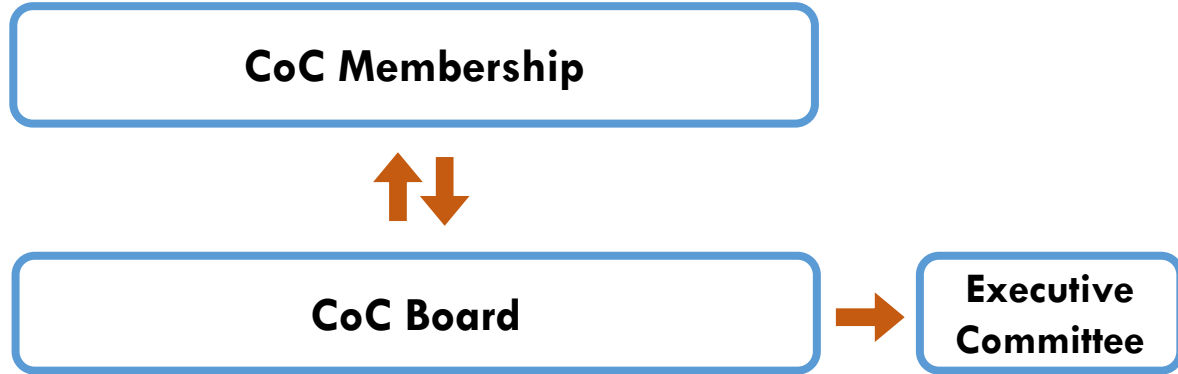
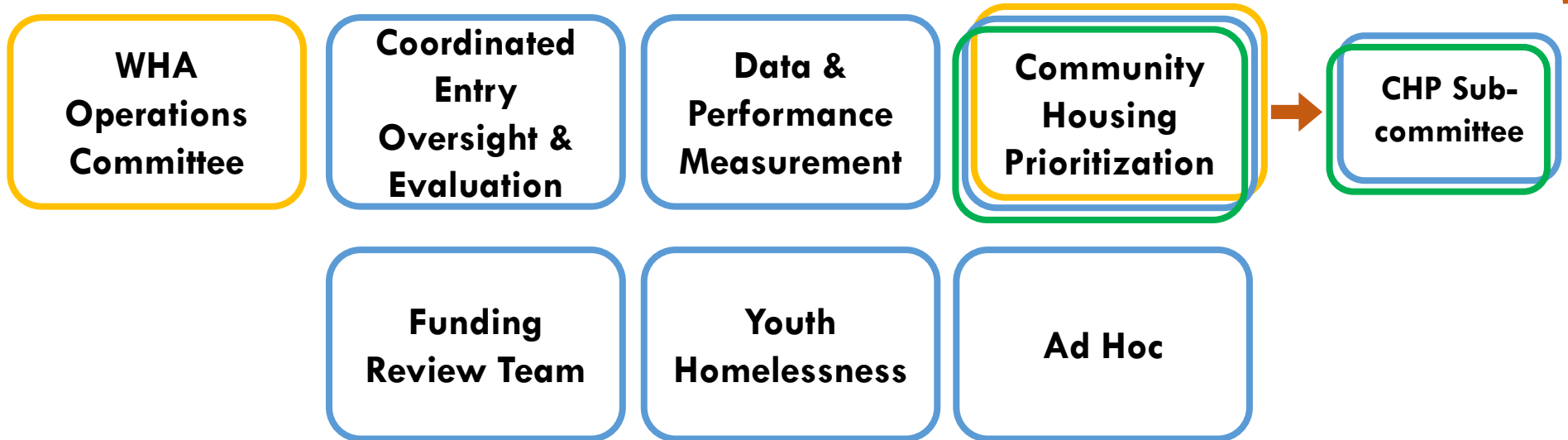


# WASHTENAW COUNTY CONTINUUM OF CARE (CoC)

## GOVERNING BODIES:



## COMMITTEES:



STAFFING: — OCED — WHA — HAWC

## GOVERNING BODIES

<b>CoC Membership</b>	Approves CoC Governance Charter; votes for nominated CoC Board positions. All interested parties are welcome to be a member & attend twice annual meetings.
<b>CoC Board</b>	Lead decision-making body that ensures policy implementation, makes funding decisions, oversees coordinated & systemic strategies & efforts toward ending homelessness. Broad membership includes representatives from a wide range of systems that impact those experiencing homelessness.
<b>CoC Board Executive Committee</b>	Provides leadership to the CoC Board; Composed of two co-chairpersons, a secretary, & chairs from each of the CoC Committees.

## COMMITTEES

<b>Washtenaw Housing Alliance Operations Committee</b>	Informs & implements the community's Blueprint to End Homelessness; discusses community goal progress, emerging barriers/issues, & Coordinated Funding; makes system & policy recommendations to the CoC Board; selects certain CoC Board seats. Comprised of executive leadership of WHA member-agencies that provide housing/services to people at risk for or experiencing homelessness.
<b>Coordinated Entry Oversight &amp; Evaluation</b>	Monitors the implementation & effectiveness of the CoC's coordinated entry; reviews coordinated entry evaluation results, relevant policies & procedures, & marketing materials to make improvement recommendations to the system & to centralized intake agency, Housing Access of Washtenaw County (HAWC).
<b>Data &amp; Performance Measurement</b>	Ensures local compliance with HUD data standards; improves agency & community-wide data quality; uses data to inform CoC program/system design & to measure progress on community goals.
<b>Community Housing Prioritization (CHP)</b>	Uses a by-name list to prioritize the most vulnerable for available permanent housing resources. Closed committee comprised of agencies that provide housing or services to those experiencing homelessness.
<b>CHP Subcommittee</b>	Meets to discuss individuals whose vulnerabilities may not be reflected by the common assessment tool used to determine acuity & appropriate housing intervention.
<b>Funding Review Team</b>	Reviews program outcomes, compliance, & data quality to make funding recommendations to the CoC Board for the CoC & Emergency Solutions Grants (ESG) annual funding competitions.
<b>Youth Homelessness</b>	Provides oversight & coordination to strategies & goals to address the unique barriers experienced by unaccompanied youth experiencing homelessness or housing instability.
<b>Ad Hoc</b>	Workgroups or committees created as needed to address arising issues & barriers to ending homelessness.

## STAFFING

<b>Washtenaw County Office of Community &amp; Economic Development</b>	Designated as the CoC & Homeless Management Information System (HMIS) lead agency to ensure compliance to federal & state regulations, as well as submissions of mandated reporting and annual funding competitions.
<b>Washtenaw Housing Alliance</b>	Facilitates, encourages, & monitors efforts towards ending homelessness; provides training that supports innovation & best practices; leads advocacy efforts, particularly in the development of more affordable housing.
<b>Housing Access for Washtenaw County</b>	A program of the Salvation Army, HAWC performs centralized intake & assessment functions for the community's coordinated entry.