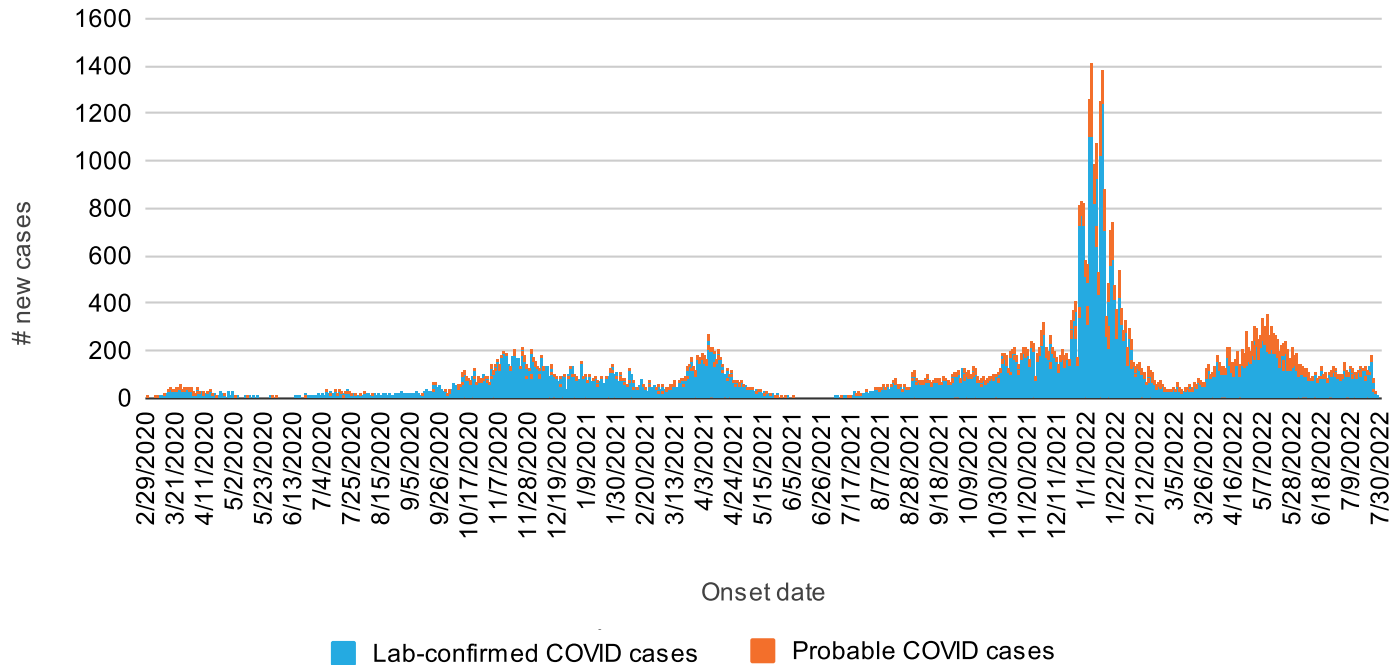


Confirmed and Probable COVID-19 cases in Washtenaw County Residents (by symptom onset date) (as of 7/28/22)



Washtenaw County (N confirmed = 79741, probable = 14249)



These data are preliminary.

This graph is no longer being updated. Please see the New Confirmed COVID-19 Cases by Symptom Onset Week Graph on the WCHD COVID-19 Cases webpage (www.washtenaw.org/3108/Cases).