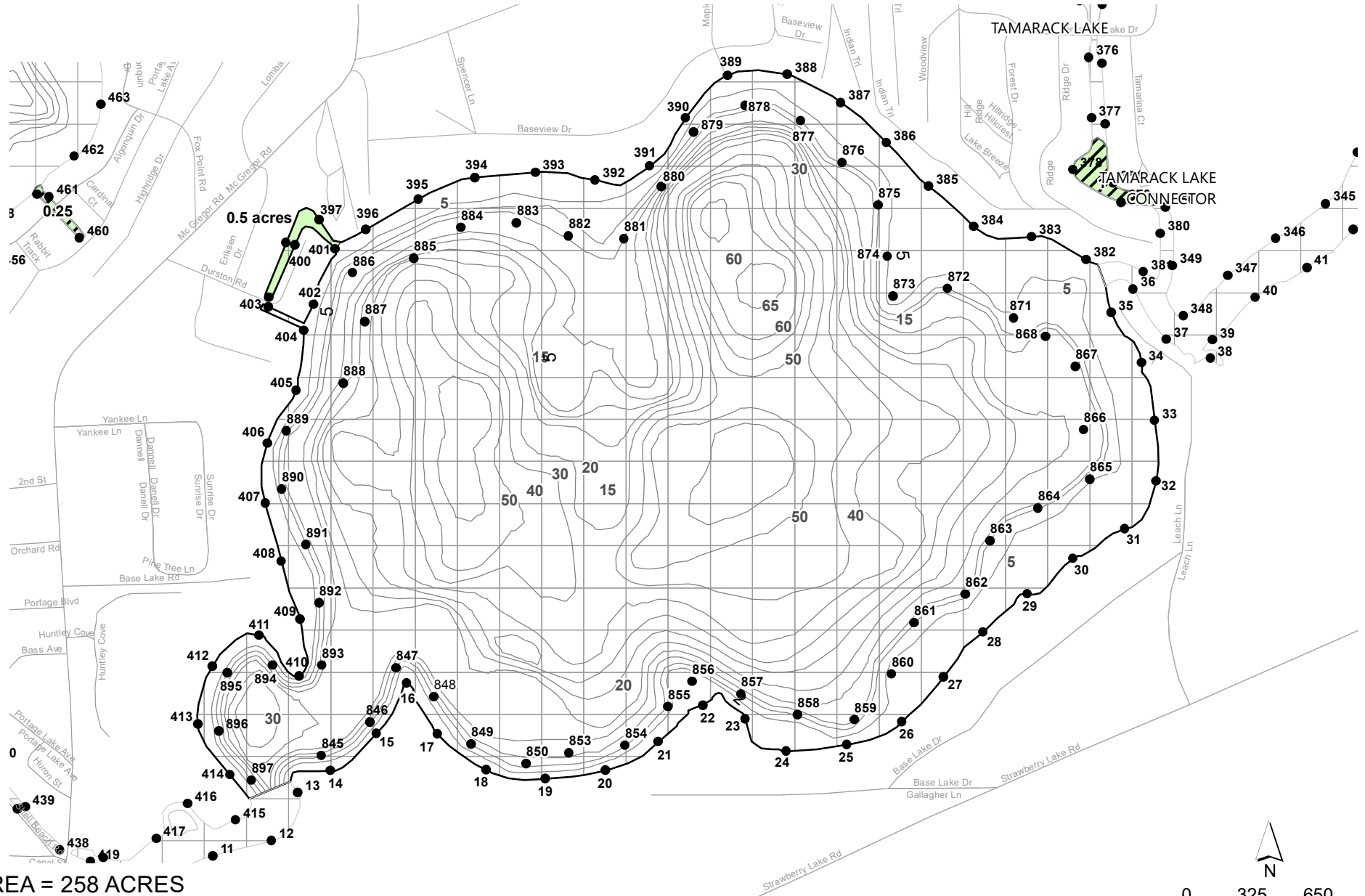


BASE LINE LAKE LIVINGSTON/WASHTENAW COUNTIES, MICHIGAN MAY 3, 2022 TREATMENT MAP

□ = 1 ACRE

Treatment

Algae = 0.5 acre of nuisance filamentous algae w/chelated copper (Cutrine Ultra or equivalent)



LAKE AREA = 258 ACRES
REVISION DATE: FEBRUARY 2022

The applicator shall make adjustments, if needed, to comply with EGLE permit requirements.

