

2022
Washtenaw County
Equalization
Report

Prepared by: Washtenaw County Equalization Department

Raman Patel, Director

2022 Equalization

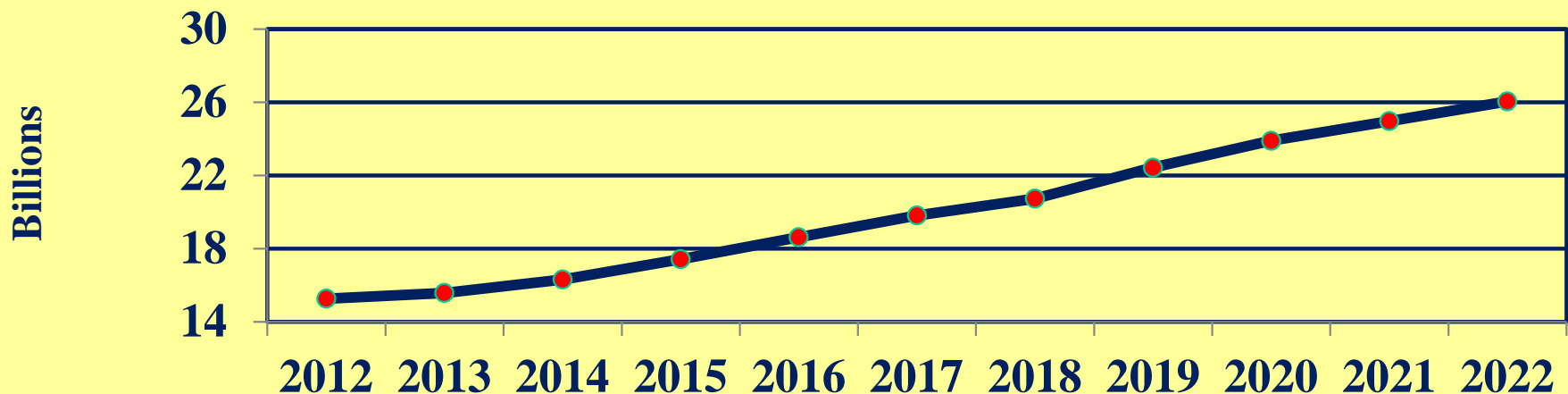
Recommendation

COUNTY EQUALIZED VALUES

	2022		
	Recommended County Equalized Values	Difference from Previous Year	Percentage of Change
AGRICULTURAL	569,765,919	15,991,469	2.89%
COMMERCIAL	5,525,972,300	252,726,550	4.79%
INDUSTRIAL	612,443,500	30,407,800	5.22%
RESIDENTIAL	18,040,722,162	762,198,699	4.41%
DEVELOPMENTAL	32,548,800	-2,534,200	-7.22%
PERSONAL	1,256,257,518	17,355,520	1.40%
TOTAL C.E.V.	26,037,710,199	1,076,145,838	4.31%

COUNTY EQUALIZED VALUE

Year	CEV	Difference from Previous Year	Percentage of Change
2012	15,259,554,130	(220,621,993)	-1.43%
2013	15,579,456,634	319,902,504	2.10%
2014	16,311,668,607	732,211,973	4.70%
2015	17,424,211,122	1,112,542,515	6.28%
2016	18,623,414,888	1,199,203,766	6.88%
2017	19,817,334,331	1,193,919,443	6.41%
2018	20,733,554,714	916,220,383	4.62%
2019	22,428,171,091	1,694,616,377	8.17%
2020	23,892,751,739	1,494,580,648	6.53%
2021	24,961,564,361	1,068,812,622	4.47%
2022	26,037,710,199	1,076,145,838	4.31%

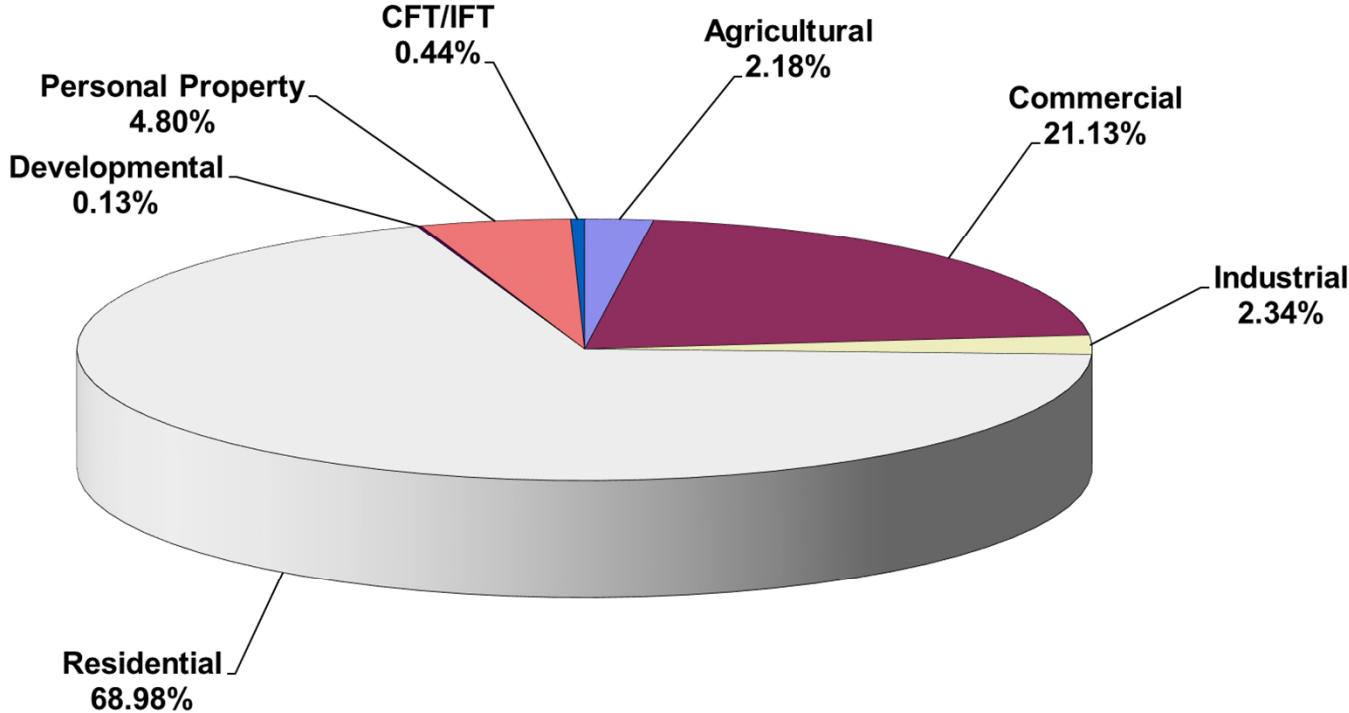


5 YEARS OF TAXABLE NEW CONSTRUCTION

Ad Valorem

- 2018 529,598,849
- 2019 663,724,498
- 2020 536,508,288
- 2021 473,484,996
- 2022 561,290,891

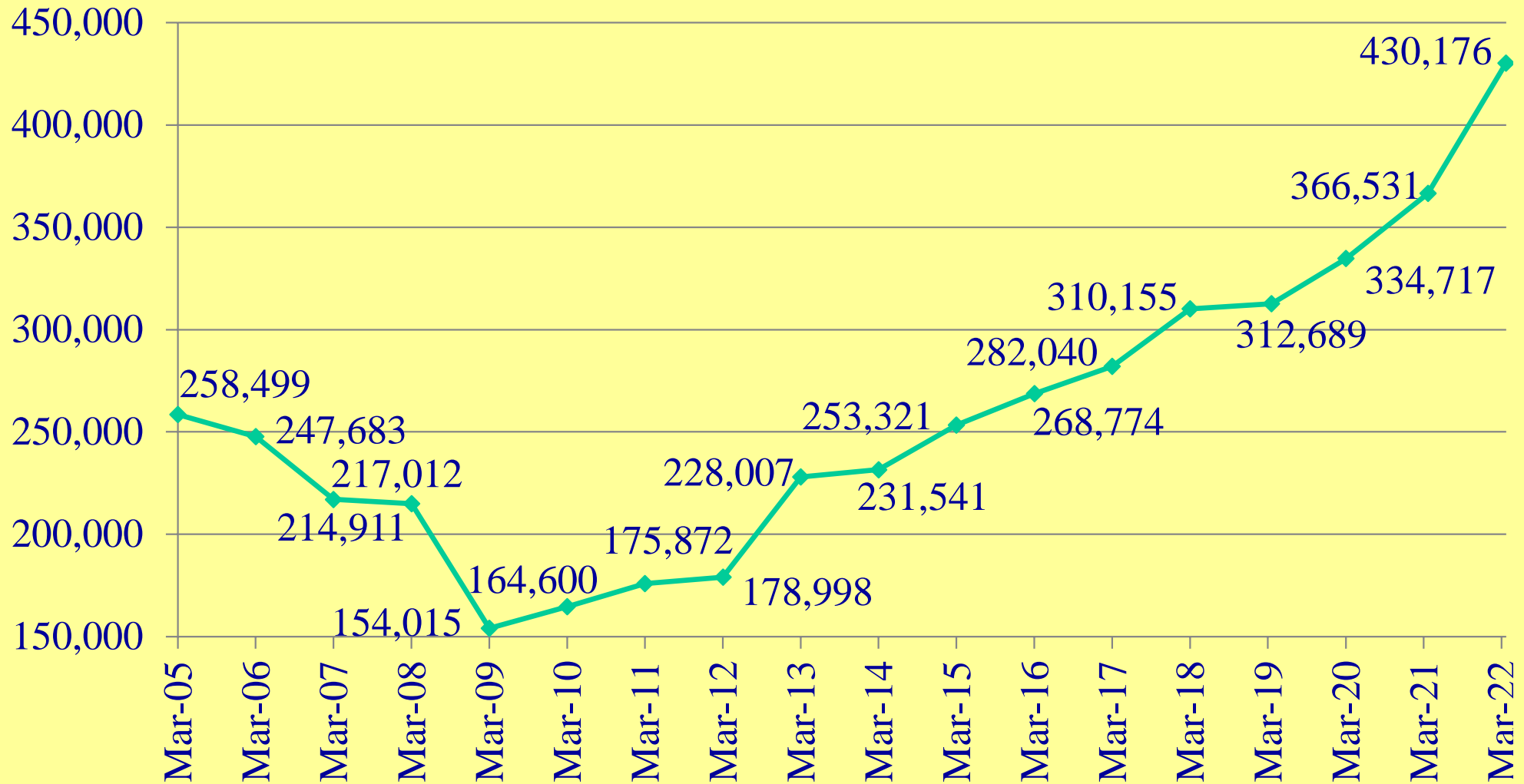
2022 PERCENTAGE OF COUNTY TOTAL BY CLASSIFICATION OF PROPERTY



Class	Agricultural	Commercial	Industrial	Residential	Developmental	Personal Property	CFT/IFT	Total County ECEV
Total S.E.V.	569,765,919	5,525,972,300	612,443,500	18,040,722,162	32,548,800	1,256,257,518	115,130,673	26,152,840,872
Percentage Of County Total	2.18%	21.13%	2.34%	68.98%	0.13%	4.80%	0.44%	100.00%

AVERAGE RESIDENTIAL SALES PRICE

Average Sales Price

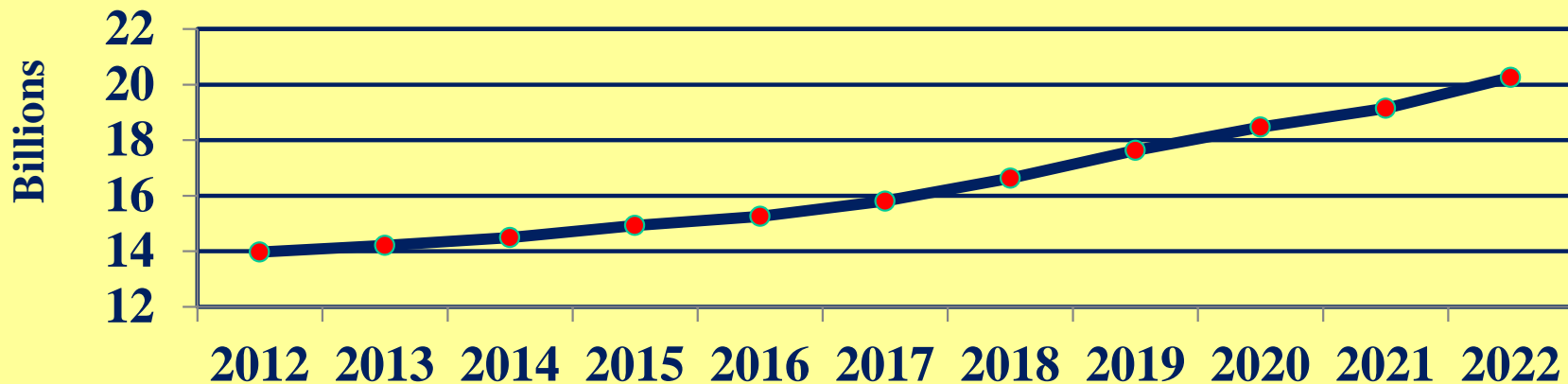


Based on information from the Ann Arbor Area Board of REALTORS® Multiple Listing Service for the period March 2005 through March 2022.

2022
TAXABLE
VALUE
TENTATIVE

COUNTY TAXABLE VALUE

Year	County Taxable Value	Difference from Previous Year	Percentage of Change
2012	13,976,296,665	(106,832,019)	-0.76%
2013	14,210,463,343	234,166,678	1.68%
2014	14,496,462,571	285,999,228	2.01%
2015	14,925,676,802	429,214,231	2.96%
2016	15,257,429,398	331,752,596	2.22%
2017	15,807,731,211	550,301,813	3.61%
2018	16,634,606,777	826,875,566	5.23%
2019	17,628,783,898	994,177,121	5.98%
2020	18,474,642,227	845,858,329	4.80%
2021	19,145,922,040	671,279,813	3.63%
2022 (Tentative)	20,256,186,456	1,110,264,416	5.80%



2022 Board of Review Action Report

- Number of Appeals to the Board of Reviews 1,000
- Number of Appeals Granted 762
- Total Assessed Value Changed - 78,739,255
- Total Taxable Value Changed - 58,672,003
- Poverty Exemptions Applied For 462
- Poverty Exemptions Granted 455
- Disabled Veterans Exemptions Granted
Parcel Count 383
Taxable Value -42,046,152

2022 EQUALIZED and TENTATIVE TAXABLE VALUES

Jurisdiction	COUNTY EQUALIZED			TAXABLE		
	2022 County Equalized Value	Difference (2022 - 2021)	% of Change	2022 TAXABLE	Difference (2022 - 2021)	% of Change
Ann Arbor City	9,456,136,680	294,414,243	3.21%	7,052,926,244	368,896,186	5.52%
Chelsea City	387,063,700	14,759,360	3.96%	302,165,121	15,703,150	5.48%
Dexter City	356,616,458	15,100,797	4.42%	276,881,367	10,237,810	3.84%
Milan City	164,990,125	10,579,687	6.85%	119,999,338	6,680,507	5.90%
Saline City	620,077,900	26,239,400	4.42%	509,535,894	27,654,553	5.74%
Ypsilanti City	542,914,052	26,961,862	5.23%	377,102,105	19,670,944	5.50%
Ann Arbor Township	778,239,500	22,797,440	3.02%	640,246,613	25,303,861	4.11%
Augusta Township	362,564,200	14,043,000	4.03%	286,954,994	12,099,337	4.40%
Bridgewater Township	141,112,800	3,492,800	2.54%	108,030,786	4,498,203	4.34%
Dexter Township	596,738,609	16,861,350	2.91%	463,687,846	21,792,095	4.93%
Freedom Township	283,161,000	48,083,704	20.45%	239,769,407	44,287,842	22.66%
Lima Township	359,806,986	14,259,829	4.13%	278,262,411	11,526,731	4.32%
Lodi Township	598,053,283	15,026,276	2.58%	510,052,781	20,246,116	4.13%
Lyndon Township	245,437,520	19,842,570	8.80%	189,774,545	11,095,489	6.21%
Manchester Township	290,422,350	12,289,550	4.42%	228,802,565	11,870,313	5.47%
Northfield Township	561,371,679	24,403,629	4.54%	417,666,619	21,817,092	5.51%
Pittsfield Township	2,860,877,200	178,315,590	6.65%	2,372,207,474	159,255,887	7.20%
Salem Township	550,611,210	12,813,910	2.38%	444,007,002	19,215,454	4.52%
Saline Township	167,328,300	11,760,800	7.56%	124,771,494	8,028,726	6.88%
Scio Township	1,880,471,000	44,841,900	2.44%	1,547,529,656	81,666,720	5.57%
Sharon Township	157,151,027	8,662,451	5.83%	112,949,800	4,664,774	4.31%
Superior Township	960,865,220	55,287,990	6.11%	788,436,142	59,898,011	8.22%
Sylvan Township	308,816,200	17,391,600	5.97%	242,195,859	16,457,739	7.29%
Webster Township	600,271,000	20,169,700	3.48%	503,236,476	27,987,063	5.89%
York Township	638,499,900	8,320,100	1.32%	525,088,235	15,020,904	2.94%
Ypsilanti Township	2,168,112,300	139,426,300	6.87%	1,593,905,682	84,688,909	5.61%
Washtenaw County	26,037,710,199	2,144,958,460	8.98%	20,256,186,456	1,110,264,416	5.80%
DNR Pitt, OPRA & IFT	100,761,537	(4,589,454)	-4.36%	65,946,589	(2,128,060)	-3.13%
TOTAL COUNTY	26,138,471,736	2,114,604,016	8.80%	20,322,133,045	1,108,136,356	5.77%

2022 EQUALIZED and TENTATIVE TAXABLE VALUES

Continued

Jurisdiction	COUNTY EQUALIZED			TAXABLE		
	2022 County Equalized Value	Difference (2022 - 2021)	% of Change	2022 TAXABLE	Difference (2022 - 2021)	% of Change
SCHOOL DISTRICTS	26,037,710,199	1,076,145,838		20,256,186,456	1,110,264,416	
Ann Arbor	14,259,817,801	504,676,171	3.67%	11,012,119,002	599,601,595	5.76%
Chelsea	1,383,065,339	67,129,137	5.10%	1,071,713,090	57,719,676	5.69%
Clinton	102,028,250	4,367,750	4.47%	75,502,399	3,481,031	4.83%
Columbia	19,819,000	1,776,850	9.85%	14,512,197	789,009	5.75%
Dexter	1,878,067,580	55,227,203	3.03%	1,513,473,403	72,900,281	5.06%
Grass Lake	3,871,485	175,270	4.74%	2,338,565	174,355	8.06%
Lincoln	1,203,436,500	55,433,500	4.83%	941,049,129	52,998,007	5.97%
Manchester	642,628,521	60,311,475	10.36%	517,241,157	57,801,096	12.58%
Milan	486,317,425	10,650,987	2.24%	382,406,106	7,094,272	1.89%
Napoleon	402,541	(5,223)	-1.28%	172,916	4,172	2.47%
Northville	30,244,900	(4,451,850)	-12.83%	26,281,930	(4,403,529)	-14.35%
Pinckney	49,049,595	1,938,820	4.12%	35,839,279	1,999,745	5.91%
Plymouth Canton	200,424,200	3,664,570	1.86%	166,886,492	6,920,042	4.33%
Saline	2,502,494,241	104,521,757	4.36%	2,094,513,033	106,331,057	5.35%
South Lyon	448,929,597	17,885,647	4.15%	355,894,431	20,396,475	6.08%
Stockbridge	46,690,600	3,533,850	8.19%	37,036,028	1,835,413	5.21%
Van Buren	206,898,200	13,087,600	6.75%	148,478,852	3,711,605	2.56%
Whitmore Lake	417,590,492	18,598,342	4.66%	309,744,260	17,872,215	6.12%
Ypsilanti	2,155,933,932	157,623,982	7.89%	1,550,984,187	103,037,899	7.12%
COMMUNITY COLLEGES	26,037,710,199	1,076,145,838		20,256,186,456	1,110,264,416	
Oakland	402,961,147	16,810,897	4.35%	318,904,467	18,942,611	6.32%
Schoolcraft	110,426,340	(4,371,080)	-3.81%	92,238,443	(1,849,924)	-1.97%
Washtenaw	25,524,322,712	1,063,706,021	4.35%	19,845,043,546	1,093,171,729	5.83%
INTERMEDIATE SCHOOLS	26,037,710,199	1,076,145,838		20,256,186,456	1,110,264,416	
Ingham	46,690,600	3,533,850	8.19%	37,036,028	1,835,413	5.21%
Jackson	24,093,026	1,946,897	8.79%	17,023,678	967,536	6.03%
Lenawee	85,849,943	4,848,436	5.99%	75,502,399	3,481,031	4.83%
Livingston	49,049,595	1,938,820	4.12%	35,839,279	1,999,745	5.91%
Oakland	448,929,597	17,885,647	4.15%	355,894,431	20,396,475	6.08%
Washtenaw	24,945,530,138	1,033,691,868	4.32%	19,393,243,367	1,075,356,098	5.87%
Wayne	437,567,300	12,300,320	2.89%	341,647,274	6,228,118	1.86%

2022 EQUALIZED and TENTATIVE TAXABLE VALUES

Continued

Jurisdiction	COUNTY EQUALIZED			TAXABLE		
	2022 CEV	Difference (2022 - 2021)	% of Change	2022 TAXABLE	Difference (2022 - 2021)	% of Change
VILLAGES						
Barton Hills	87,134,700	3,741,200	4.49%	71,287,220	5,413,861	8.22%
Manchester	92,364,300	3,008,550	3.37%	72,431,471	4,310,358	6.33%
AUTHORITIES						
A. A. T. A.	9,456,136,680	294,414,243	3.21%	7,052,926,244	368,896,186	5.52%
A.A.A.T.A.	12,167,163,032	460,802,405	3.94%	9,019,900,470	475,879,677	5.57%
C.A.F.A	1,301,124,406	66,253,359	5.37%	1,012,397,936	54,783,109	5.72%
H. C. M. A.	26,037,710,199	1,076,145,838	4.31%	20,256,186,456	1,110,264,416	5.80%
Y. C. U. A.	2,711,026,352	166,388,162	6.54%	1,968,671,587	104,359,853	5.60%
Chelsea City - DDA	23,729,700	1,150,000	5.09%	17,069,486	1,005,845	6.26%
Milan City - DDA	5,791,100	35,798	0.62%	4,150,279	113,029	2.80%
Ypsilanti City - DDA	40,031,500	1,505,200	3.91%	28,567,323	1,160,045	4.23%
LIBRARIES						
Ann Arbor District	14,226,028,101	503,435,571	3.67%	10,989,761,799	598,937,319	5.76%
Chelsea District	1,388,786,654	67,087,924	5.08%	1,074,541,534	58,417,882	5.75%
Dexter District	1,878,067,580	55,227,203	3.03%	1,513,473,403	72,900,281	5.06%
Manchester District	678,311,350	62,515,354	10.15%	549,363,501	59,666,974	12.18%
Milan Public	164,990,125	10,579,687	6.85%	119,999,338	6,680,507	5.90%
Northfield Public	561,371,679	24,403,629	4.54%	417,666,619	21,817,092	5.51%
Saline District	2,502,494,241	104,521,757	4.36%	2,093,338,486	106,331,057	5.35%
Salem South Lyon District	518,132,860	11,168,360	2.20%	418,639,926	18,020,387	4.50%
Ypsilanti District	3,262,691,982	213,972,302	7.02%	2,399,855,760	149,387,159	6.64%

2022 CFT/IFT ASSESSED and TAXABLE VALUE

	2022 ASSESSED VALUE			2022
	COMMERCIAL/INDUSTRIAL FACILITES TAX			TAXABLE
	1/2 RATE	FULL RATE	TOTAL	TOTAL
TOWNSHIPS:				
Ann Arbor	26,265,600	0	26,265,600	25,634,240
Manchester	1,108,450	0	1,108,450	1,108,450
Northfield	1,505,600	0	1,505,600	1,493,241
Pittsfield	28,091,000	0	28,091,000	27,278,334
Scio	5,494,300	0	5,494,300	5,410,375
Superior	7,161,900	0	7,161,900	2,721,777
York	19,360,700	0	19,360,700	18,697,648
Ypsilanti	841,700	0	841,700	841,700
CITIES:				
Ann Arbor	0	0	0	0
Chelsea	3,001,200	0	3,001,200	2,902,187
Dexter	7,232,323	0	7,232,323	7,128,377
Milan	496,200	0	496,200	337,047
Saline	14,571,700	0	14,571,700	12,729,995
Ypsilanti	0	0	0	0
Total	115,130,673	0	115,130,673	106,283,371

DNR: Act 513 of 2004

PILT

	<u>2022 SEV</u>	<u>2022 Taxable</u>
• Dexter Township	11,023,300	3,406,122
• Lima Township	464,900	71,376
• Lyndon Township	22,786,300	5,857,857
• Northfield Township	69,700	68,451
• Saline Township	10,600	2,798
• Sharon Township	2,891,600	545,674
• Sylvan Township	3,396,500	1,034,106
• York Township	22,100	4,062
• Ypsilanti Township	108,800	100,133
• Saline City	147,600	68,287
	Total County: 40,921,400	11,158,866

Moved from Ad Valorem Roll to Act 513 Roll

OPRA

Obsolete Property Rehabilitation

	SEV	TAXABLE
2022	2,224,100	1,596,906
2021	2,424,900	1,735,121
2020	2,460,700	1,755,461
2019	1,807,800	1,244,783
2018	1,621,800	1,281,155
2017	1,604,300	1,276,812
2016	1,601,400	1,386,208
2015	1,115,800	999,945
2014	1,026,200	914,849
2013	1,399,200	880,233
2012	1,626,300	1,474,610

The Obsolete Property Rehabilitation Act (OPRA), Public Act 146 of 2000, provides for a tax incentive to encourage the redevelopment of obsolete buildings. The tax incentive is designed to assist in the redevelopment of older buildings in which a facility is contaminated, blighted or functionally obsolete. The goal is to rehabilitate older buildings into vibrant commercial and commercial housing projects.

What is the CPI/Consumer Price Index?

A measure that examines the weighted average of prices of a basket of consumer goods and services, such as transportation, food and medical care. The CPI is calculated by taking price changes for each item in the predetermined basket of goods and averaging them; the goods are weighted according to their importance.

CONSUMER PRICE INDEX

Year	Jan	Feb	Mar	Apr	May	Jun	Jul	Aug	Sep	Oct	Nov	Dec
2009	211.143	212.193	212.709	213.24	213.856	215.693	215.351	215.834	215.969	216.177	216.33	215.949
2010	216.687	216.741	217.631	218.009	218.178	217.965	218.011	218.312	218.439	218.711	218.803	219.179
2011	220.223	221.309	223.467	224.906	225.964	225.722	225.922	226.545	226.889	226.421	226.23	225.672
2012	226.665	227.663	229.392	230.085	229.815	229.478	229.104	230.379	231.407	231.317	230.221	229.601
2013	230.28	232.166	232.773	232.531	232.945	233.504	233.596	233.877	234.149	233.546	233.069	233.049
2014	233.916	234.781	236.293	237.072	237.900	238.343	238.250	237.852	238.031	237.433	236.151	234.812
2015	233.707	234.722	236.119	236.599	237.805	238.638	238.654	238.316	237.945	237.838	237.336	236.525
2016	236.916	237.111	238.132	239.261	240.236	241.038	240.647	240.853	241.428	241.729	241.353	241.432
2017	242.839	243.603	243.801	244.524	244.733	244.955	244.786	245.519	246.819	246.663	246.669	246.524
2018	247.867	248.991	249.554	250.546	251.588	251.989	252.006	252.146	252.439	252.885	252.038	251.233
2019	251.712	252.776	254.202	255.548	256.092	256.143	256.571	256.558	256.759	257.346	257.208	256.974
2020	257.971	258.678	258.115	256.389	256.394	257.797	259.101	259.918	260.280	260.388	260.229	260.474
2021	261.582	263.014	264.877	267.054	269.195	271.696	273.003	273.567	274.310	276.589	277.948	278.802
2022	281.148	283.716	287.504									

October 2020 thru September 2021	266.616	=	1.033 CPI	(211.34d(L))
October 2019 thru September 2020	258.014			

2022 MRF/TAX RATE

2021 Taxable Value minus RZ		2021 Losses		2022 Consumers Price Index		(2021 Taxable minus Losses) x CPI		2022 Millage Reduction Fraction MCL 211.34d
19,113,495,244	-	195,886,969	x	1.033	=	19,541,889,348	=	0.9939
20,223,870,763	-	561,290,891			=	19,662,579,872		
2022 Taxable Value minus RZ		2022 Additions				2022 Taxable - Additions		Total County Reduction Fraction
2021 Washtenaw County Millage Permanently Reduced (from the 2021 L-4029)		2022 Millage Reduction Fraction		2022 Permanently Reduced Millage				
4.3780	x	0.9939	=	4.3512	*			

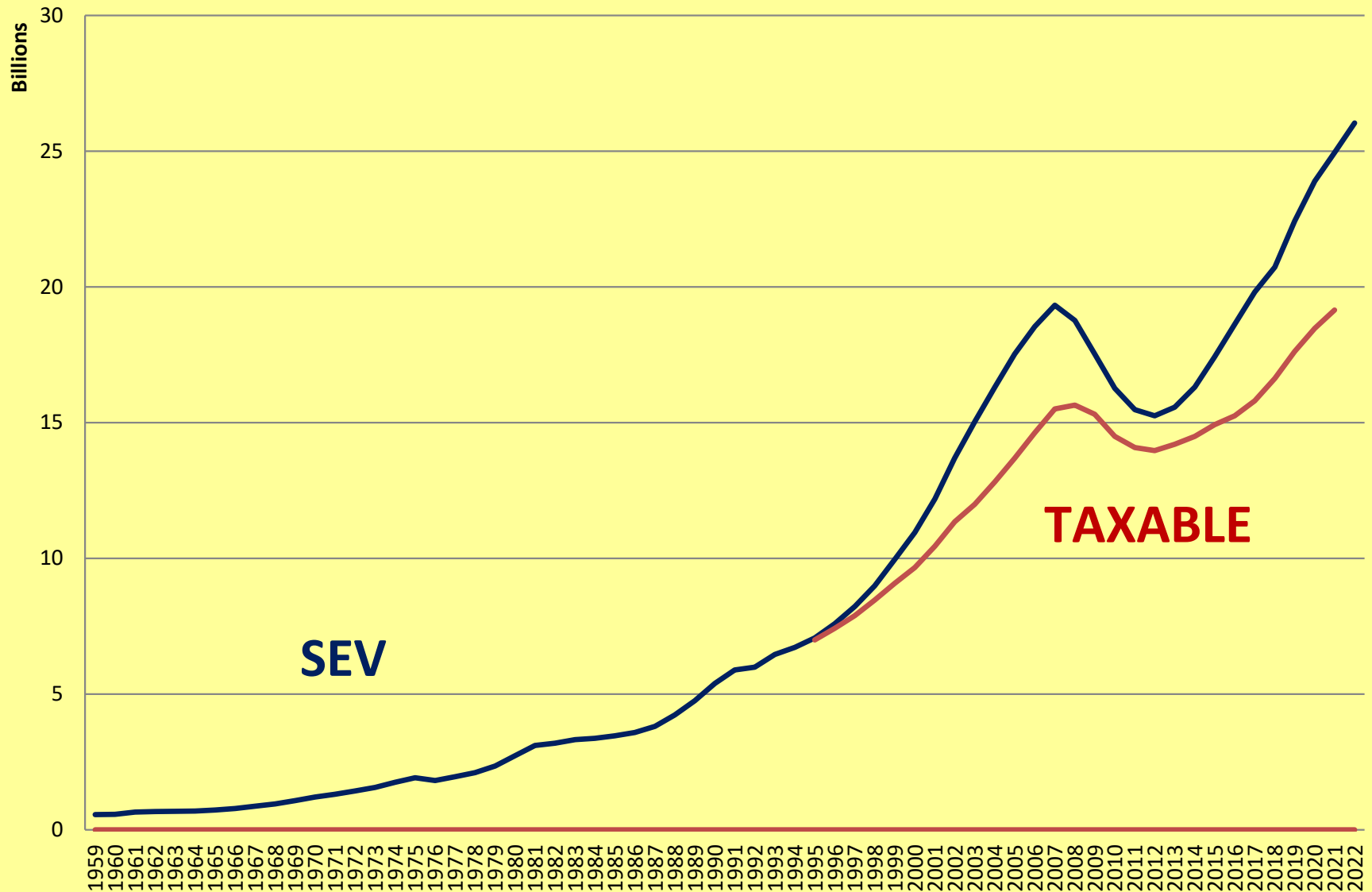
* This rate must be rounded DOWN to 4 decimal places. (See STC Bulletin No. 11 of 1999, Supplemented by Letter of 6/7/2000.) Reduced Millage is *not* rounded up in the conventional manner.

1959 – 2022 EQUALIZED/TAXABLE VALUES

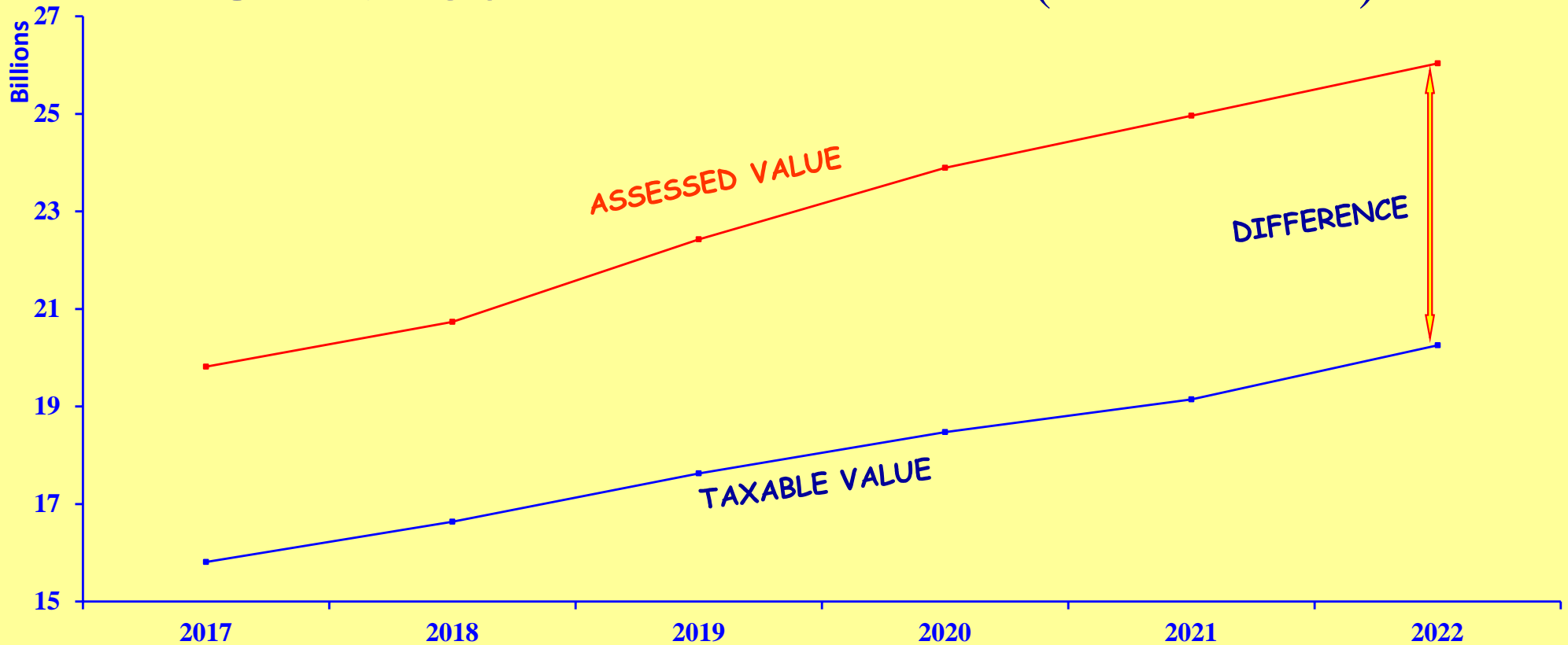
Year	State Equalized Value	Taxable	Increase/Decrease	
			S.E.V.	TAXABLE
1959	562,333,088	N/A		N/A
1960	571,892,750	N/A	1.70%	N/A
1961	657,380,058	N/A	14.95%	N/A
1962	668,421,000	N/A	1.68%	N/A
1963	678,255,000	N/A	1.47%	N/A
1964	691,648,000	N/A	1.97%	N/A
1965	733,836,400	N/A	6.10%	N/A
1966	781,373,097	N/A	6.48%	N/A
1967	866,720,254	N/A	10.92%	N/A
1968	954,613,294	N/A	10.14%	N/A
1969	1,071,980,429	N/A	12.29%	N/A
1970	1,210,113,881	N/A	12.89%	N/A
1971	1,311,645,362	N/A	8.39%	N/A
1972	1,427,515,960	N/A	8.83%	N/A
1973	1,559,616,348	N/A	9.25%	N/A
1974	1,749,151,568	N/A	12.15%	N/A
1975	1,918,248,701	N/A	9.67%	N/A
1976	1,817,230,348	N/A	-5.27%	N/A
1977	1,951,499,413	N/A	7.39%	N/A
1978	2,109,069,777	N/A	8.07%	N/A
1979	2,351,348,527	N/A	11.49%	N/A
1980	2,730,410,472	N/A	16.12%	N/A
1981	3,106,482,982	N/A	13.77%	N/A
1982	3,193,708,272	N/A	2.81%	N/A
1983	3,318,295,039	N/A	3.90%	N/A
1984	3,371,409,647	N/A	1.60%	N/A
1985	3,466,707,417	N/A	2.38%	N/A
1986	3,580,781,045	N/A	3.29%	N/A
1987	3,810,766,536	N/A	6.42%	N/A
1988	4,229,977,221	N/A	11.00%	N/A
1989	4,750,077,125	N/A	12.30%	N/A
1990	5,390,268,390	N/A	13.48%	N/A
1991	5,882,226,696	N/A	9.13%	N/A

Year	State Equalized Value	Taxable	Increase/Decrease	
			S.E.V.	TAXABLE
1992	5,990,899,608	N/A	1.85%	N/A
1993	6,456,162,804	N/A	7.77%	N/A
1994	6,717,463,432	N/A	4.05%	N/A
1995	7,063,561,166	6,991,654,122	5.15%	4.08%
1996	7,588,824,479	7,417,538,423	7.44%	6.09%
1997	8,222,788,510	7,887,194,490	8.35%	6.33%
1998	8,981,072,796	8,461,897,840	9.22%	7.29%
1999	9,955,398,867	9,077,146,725	10.85%	7.27%
2000	10,951,329,363	9,659,379,194	10.00%	6.41%
2001	12,191,018,138	10,449,795,056	11.32%	8.18%
2002	13,702,101,826	11,345,352,436	12.40%	8.57%
2003	15,045,690,552	11,987,681,623	9.81%	5.66%
2004	16,314,985,717	12,821,032,767	8.44%	6.95%
2005	17,534,623,609	13,693,361,327	7.48%	6.80%
2006	18,545,553,160	14,629,742,407	5.77%	6.84%
2007	19,330,951,897	15,510,438,244	4.23%	6.02%
2008	18,765,026,863	15,650,088,801	-2.93%	0.90%
2009	17,529,497,260	15,312,121,625	-6.58%	-2.16%
2010	16,263,508,267	14,496,599,262	-7.22%	-5.33%
2011	15,480,176,123	14,083,128,684	-4.82%	-2.85%
2012	15,259,554,130	13,976,296,665	-1.43%	-0.76%
2013	15,579,456,634	14,210,463,343	2.10%	1.68%
2014	16,311,668,607	14,496,462,571	4.70%	2.01%
2015	17,424,211,122	14,925,676,802	6.82%	2.96%
2016	18,623,414,888	15,257,429,398	6.88%	2.22%
2017	19,817,334,331	15,807,731,211	6.41%	3.61%
2018	20,733,554,714	16,634,606,777	4.62%	5.23%
2019	22,428,171,091	17,628,783,898	8.17%	5.98%
2020	23,892,751,739	18,474,642,227	6.53%	4.80%
2021	24,961,564,361	19,145,922,040	4.47%	3.63%
2022	26,037,710,199	20,256,186,456	4.31%	5.80%

64 YEARS OF WASHTENAW COUNTY EQUALIZED/TAXABLE VALUES



CEV & TAXABLE (TENTATIVE)



Year	2017	2018	2019	2020	2021	2022
COUNTY EQUALIZED VALUE	19,817,334,331	20,733,554,714	22,428,171,091	23,892,751,739	24,961,564,361	26,037,710,199
TOTAL TAXABLE	15,807,731,211	16,634,606,777	17,628,783,898	18,474,642,227	19,145,922,040	20,256,186,456
DIFFERENCE C.EV./TAXABLE	4,009,603,120	4,098,947,937	4,799,387,193	5,418,109,512	5,815,642,321	5,781,523,743
PERCENTAGE DIFFERENCE C.EV./TAXABLE	-20.23%	-19.77%	-21.40%	-22.68%	-23.30%	-22.20%

2022 WASHTENAW COUNTY GOVERNMENT General Fund Levy

	TAXABLE VALUE	
	2021	2022
Ad Valorem Roll (Tentative)	19,145,922,040	20,256,186,456
Equivalent IFT 1/2 Rate	+ 55,436,700	+ 53,141,686
DNR PILT Program	+ 10,855,257	+ 11,158,866
Ypsilanti City OPRA District	+ 1,735,121	+ 1,596,906
SPECIAL ACTS PARCELS Equivalent Taxable Value	+ 47,571	+ 49,131
Equivalent County Taxable Value	19,213,996,689	20,322,133,045
TAX RATE (General Fund)	4.3780	4.3512
TOTAL REVENUE (General Fund)	84,118,878	88,425,665
PERCENTAGE OF CHANGE (General Fund)	3.10%	5.12%

**+ \$ 4,306,787
Increase for 2022**

Note: In addition, the Personal Property reimbursement summary report will be filed with the state by May 31.

2021 TAX DOLLARS LEVIED WASHTENAW COUNTY

EDUCATION K thru 12	507,828,482	53.13%
Local Schools Operating and Debt	286,658,291	29.99%
State Education Tax	114,023,387	11.93%
Intermediate School Districts	107,146,804	11.21%

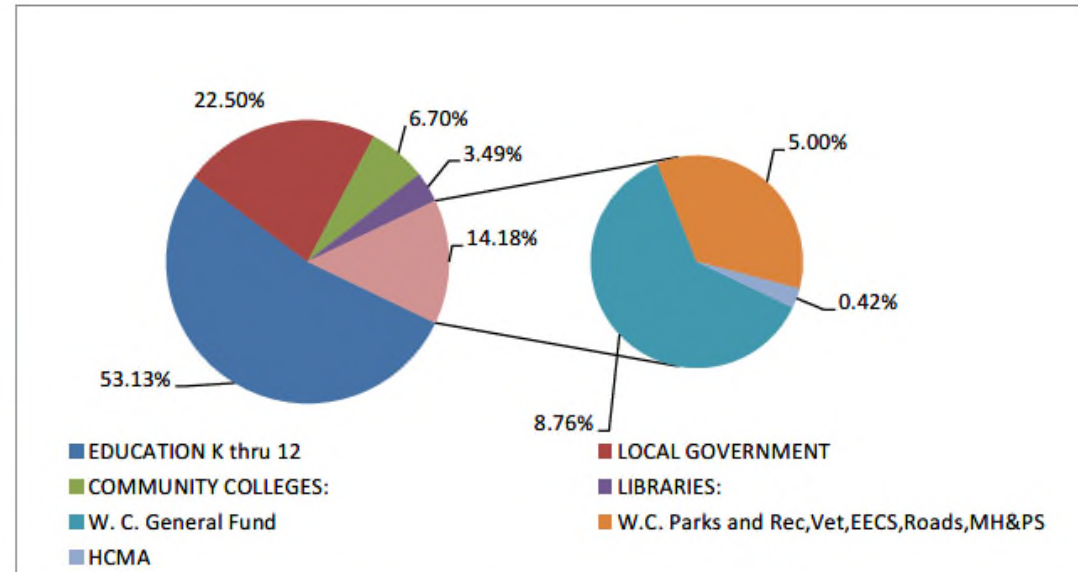
LOCAL GOVERNMENT	215,109,079	22.50%
City Village and Township Authorities	206,908,038	21.64%
	8,201,041	0.86%

WASHTENAW COUNTY	135,467,484	14.18%
General Fund	83,701,683	8.76%
Parks and Rec, Vet,EECS,Roads,MH&PS	47,771,904	5.00%
Huron Clinton Metroparks	3,993,897	0.42%

COMMUNITY COLLEGES:	64,215,478	6.70%
----------------------------	-------------------	--------------

LIBRARIES:	33,328,151	3.49%
-------------------	-------------------	--------------

GRAND TOTAL AD-VALOREM	955,948,673	100.00%
-------------------------------	--------------------	----------------

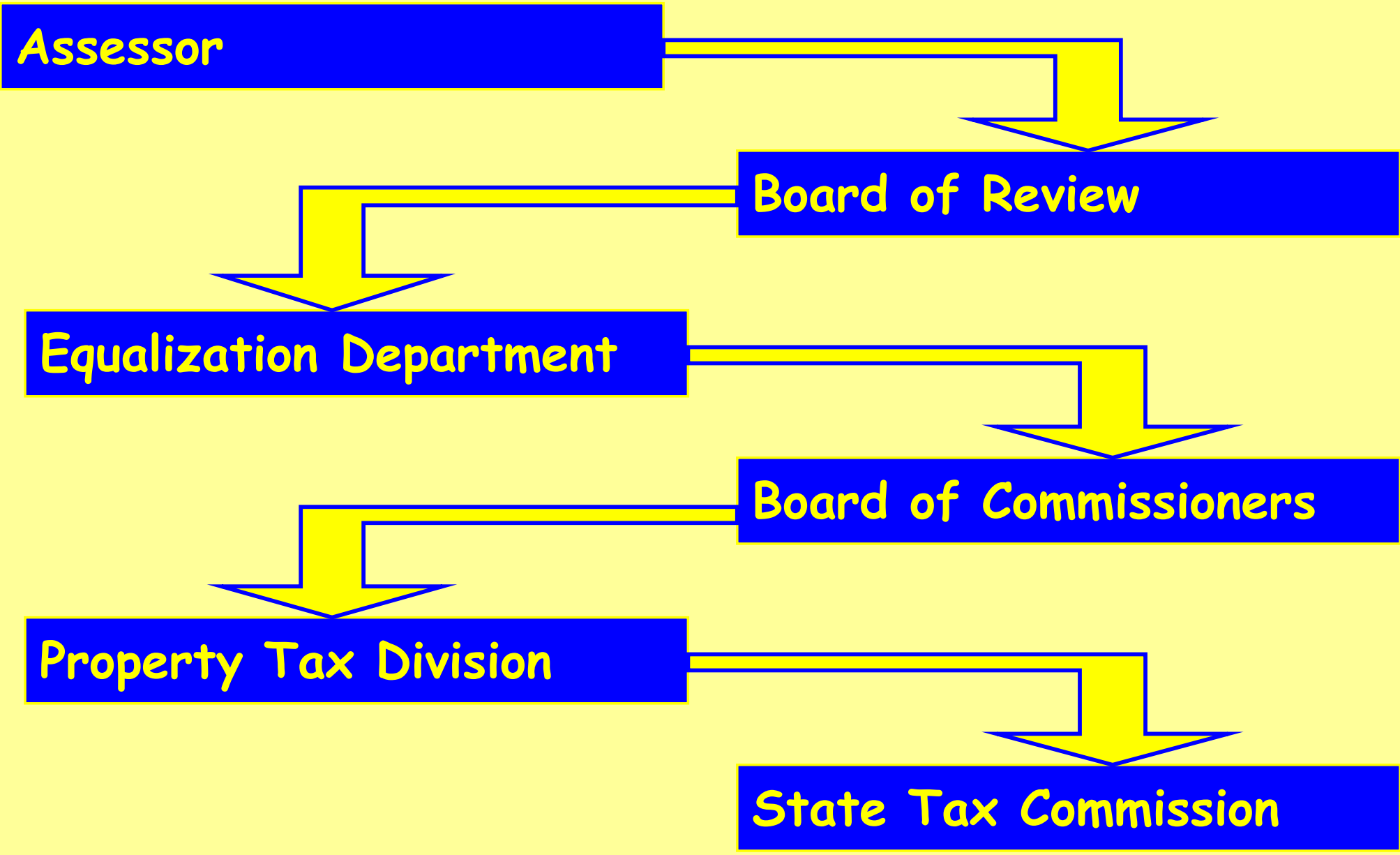


2021 TAX LEVY \$955,948,673

2020 TAX LEVY \$915,998,360

DIFFERENCE + \$39,950,313

Flow Chart



Adjacent Counties 2022

Tentative

County	State Equalized Value	Taxable Value
Washtenaw	4.31%	5.80%
Wayne	8.56%	6.11%
St Clair	5.78%	4.96%
Oakland	5.84%	6.46%
Monroe	3.85%	3.13%
Macomb	6.35%	6.19%
Livingston	5.76%	5.96%
Lenawee	6.00%	5.18%
State of Michigan	N/A	N/A