



Washtenaw County Clean Up Day

Saturday July 31, 2021

9AM - 1PM

Saline High School

1300 Campus Parkway Saline, MI

Enter event using east entrance

Acceptable Materials

Appliances (refrigerator, dryer, a/c unit, dehumidifier, etc.)

Bulky Household Waste (furniture, mattresses, scrap wood, etc.)

No concrete, asphalt, bricks, or shingles

Electronics (TVs, computers, entertainment/communication devices, etc.)

Household Hazardous Waste (paint, pesticides, cleaning supplies, oil, etc.)

No materials in larger than 6 gallon containers

No oxygen or refrigerant tanks

Containers will not be returned

Foam Packaging and Containers

Cleaned of food debris, no packing peanuts

Scrap Metal

Tires *On or off rims, no semi or agricultural tires, limit of 10 tires*

Do NOT Bring

Household Trash

Recyclable Materials (glass, cardboard, paper, plastic)



Please consider a **minimum donation of \$15.00** to help support this effort. Checks payable to Washtenaw County.

Bring 4 tires for free. We suggest a donation of \$5 for each additional tire for labor costs. Limit of 10 tires.

Bring 1 TV, computer, or appliance for free. We suggest a donation of \$10 for each additional item.

Long wait times are expected. All vehicles in line by 1PM will be served. Please only bring materials you can unload yourself in 20 minutes or less.

This event is for Washtenaw County residents only. We can't accept materials from businesses, government agencies, non-profits, or other organizations. Contact us for referrals to manage non-residential waste.

Covid-19 Safety

- ✓ Wear a mask during your visit if you are not fully vaccinated
- ✓ Remain in your vehicle except to unload foam or any lot 3 materials (see map)

For more information call **734-222-3950** or visit www.washtenaw.org/cleanup

Event Sponsors

Washtenaw County Board of Public Works | City of Ann Arbor

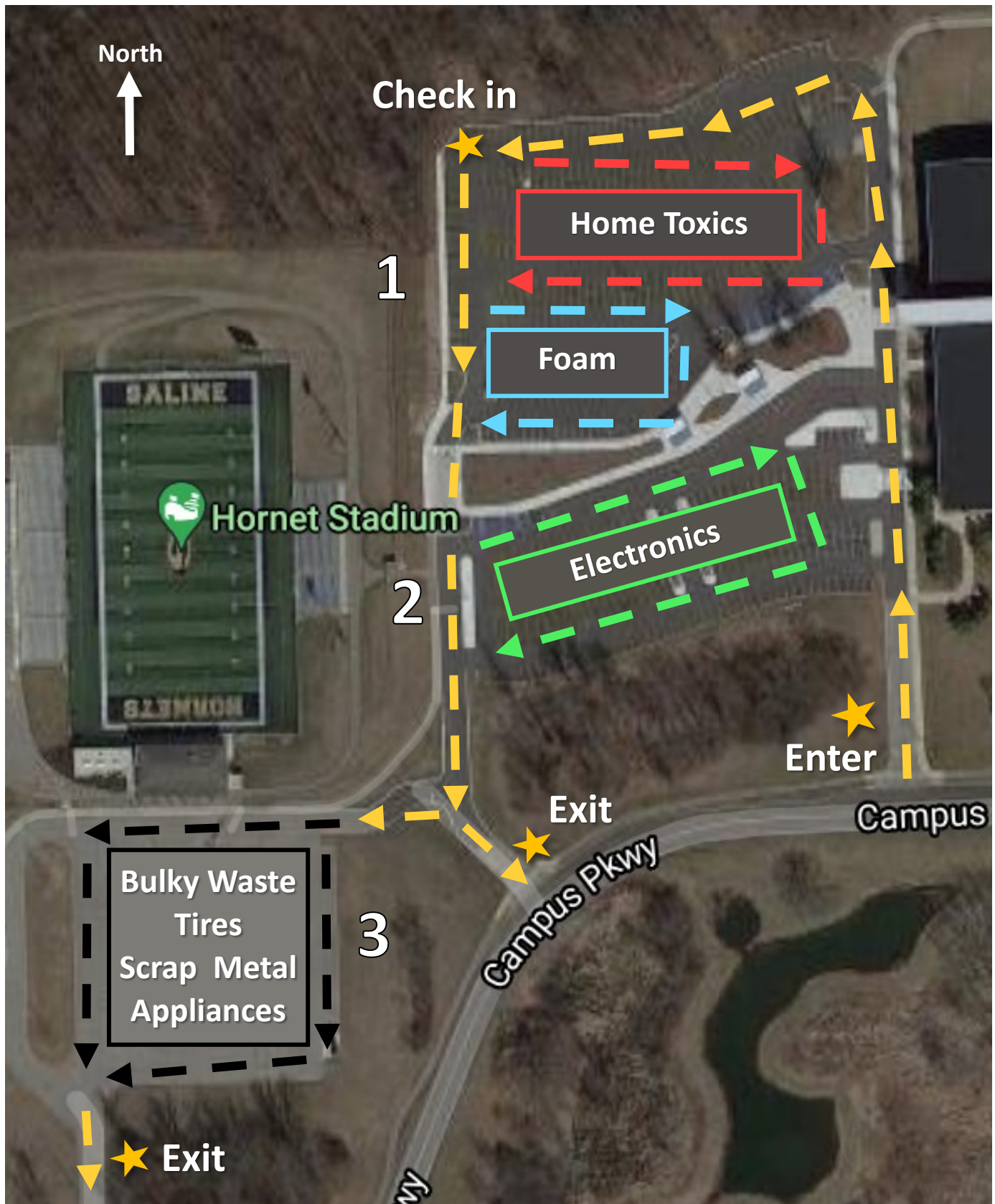
Tire disposal partly funded by the EGLE Scrap Tire CleanUp Grant

County Clean Up Day July 31, 2021

Saline High School 9 am - 1 pm



Packing tip: Pack vehicles strategically based on the map, so the materials most easily reachable are those that will be unloaded first.



Acceptable Foam Packaging & Containers

