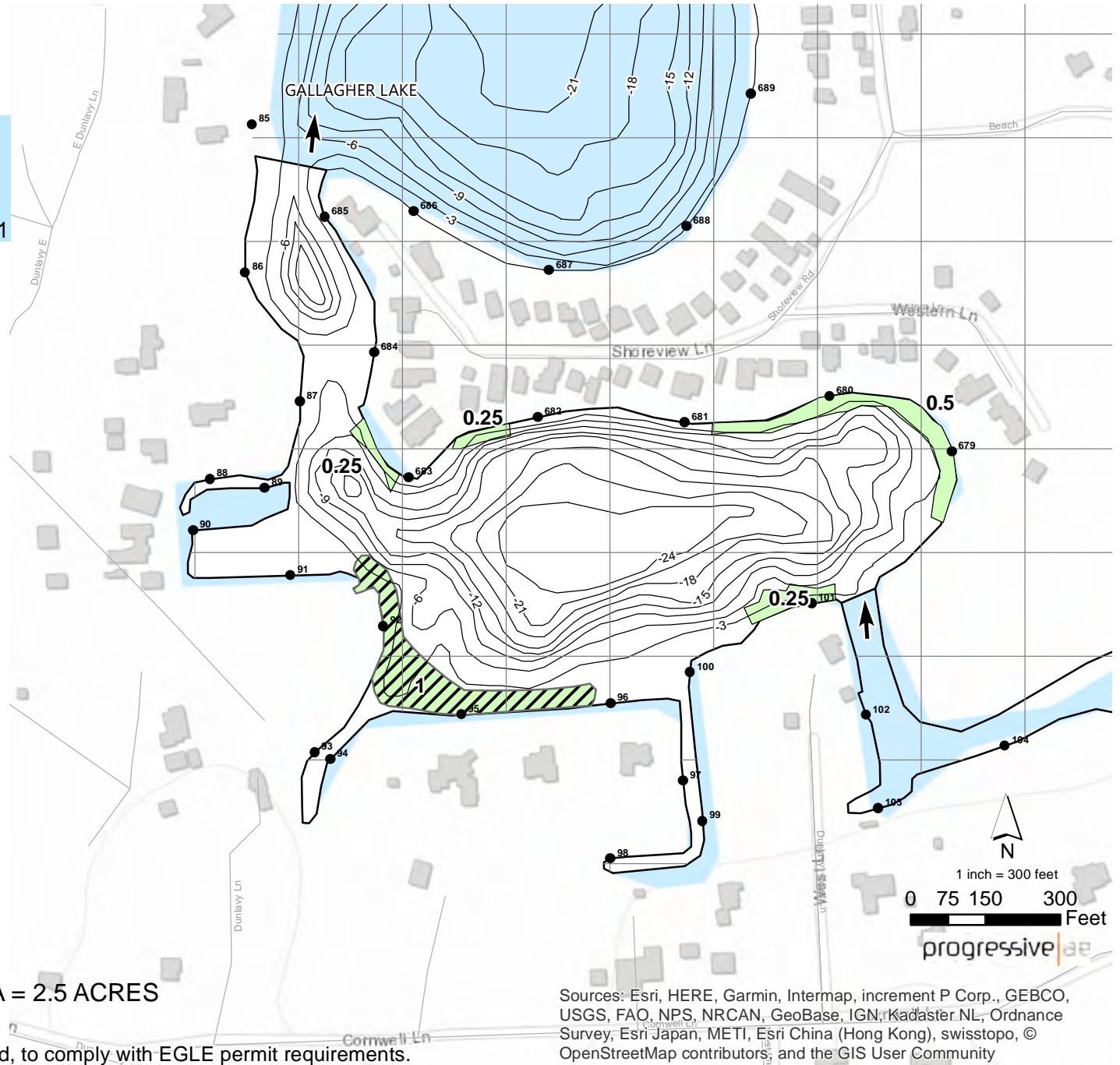


LONG (LOON) LAKE LIVINGSTON COUNTY, MICHIGAN JUNE 28, 2021 TREATMENT MAP

Treatment

- Algae = 1.25 acres of nuisance filamentous algae w/Cutrine Plus
- Copper/Hydro = 1 acre of starry stonewort w/Cutrine/Hydrothol 191



LAKE AREA = 17 ACRES
 25% OF POTENTIAL SPAWNING AREA = 2.5 ACRES
 REVISION DATE: JANUARY 2021

The applicator shall make adjustments, if needed, to comply with EGLE permit requirements.

Sources: Esri, HERE, Garmin, Intermap, increment P Corp., GEBCO, USGS, FAO, NPS, NRCAN, GeoBase, IGN, Kadaster NL, Ordnance Survey, Esri Japan, METI, Esri China (Hong Kong), swisstopo, © OpenStreetMap contributors, and the GIS User Community