

April, 2021

## 2-1-1 Impact and Community Trends Dashboards

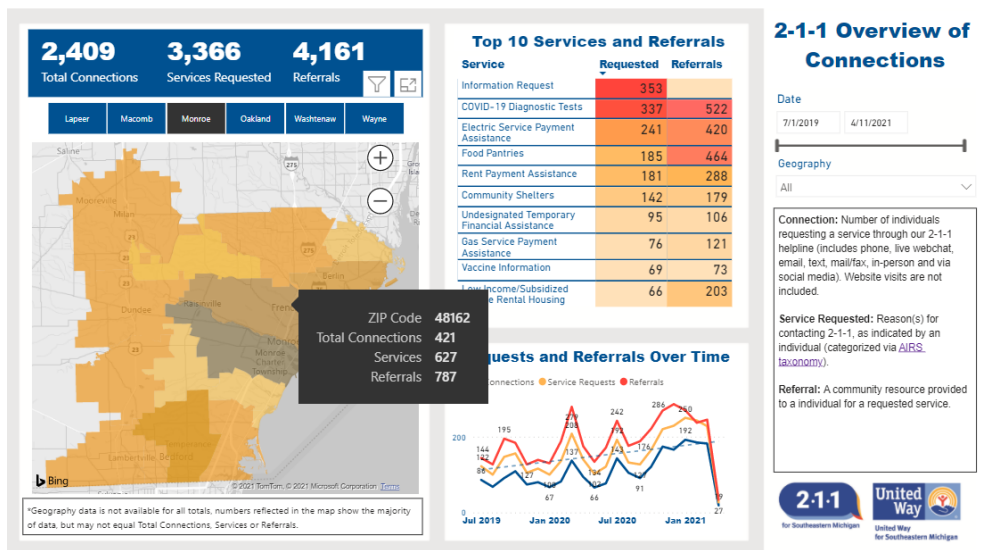
As you may know, UWSEM provides information and referrals to individuals seeking assistance across the basic need spectrum. Over the past year, we have handled 121,000 contacts, providing 235,000 referrals to individuals for service providers across Lapeer, Macomb, Monroe, Oakland, Washtenaw and Wayne counties.

To help show the impact of 2-1-1, our many partners, and the needs that exist in our communities, UWSEM has created two dashboards: 2-1-1 Impact and Community Trends.

**2-1-1 Impact: broader overview** of services requested within a community.

**Community Trends: deep dive in communities.** Can show number of referrals provided, which agencies received referrals and types of referrals provided.

Both dashboards can be easily toggled to show data over time, geography, and service/agency.



Examples of 2-1-1 Impact (top) and Community Trend (bottom).

To view and use the dashboards: <https://unitedwaysem.org/our-work/our-impact/2-1-1-impact/>

You can also visit our website, [www.unitedwaysem.org](http://www.unitedwaysem.org). Hover over “Our Work” and then click on “2-1-1 Impact” from the drop down menu.

**Questions? Concerns? What to learn more or get shown an overview?**

Contact Aaron Kuhn at [aaron.kuhn@unitedwaysem.org](mailto:aaron.kuhn@unitedwaysem.org) or 313-226-9235

