

Huron River Chain of Lakes Update

July 3, 2019

Treatment: Treatment continues to be scheduled. Please check the Aquatic Services website to view the upcoming treatment schedule. <https://www.aquaticservicesinc.info/schedules>

We are hoping to start back up treatment the week of July 15th.

Notice of all pesticide applications shall be posted prior to each application. Notices shall be posted along the shoreline with 8 1/2 x 11 inch **YELLOW** posters. They shall indicate the day of treatment, permit number, contact information, exact pesticides used and the water use restrictions (swimming, irrigation and fishing) depending on the pesticides used. In the event of additional pesticide applications, additional notices shall be posted outlining new water use restrictions.

Surveys: Progressive AE was out on the lakes July 1st and July 2nd to survey the lake conditions. Below is a fun picture of your Lake Scientist pulling some starry stonewort from the bottom of the lake.



Meet & Greet Educational Meeting: We hosted a Huron River Chain of Lakes update on June 17, 2019 at Hamburg Township Hall. If you were not able to join us please view the recording here. <https://livestream.com/accounts/11401930>

Treatment Maps: You will find the 2019 Treatment Map [here](#). I am continuing to update the website with additional information as I receive it. When calling about areas of concern, we request that you use the GPS waypoint number associated with the location. Doing so enables us to communicate the location of your information when

HELP STOP THE SPREAD OF Aquatic Invasive Species IN MICHIGAN



discussing with our contractors. You can email them to koloskil@washtenaw.org Or call 734-222-6865

Website Shortcut: To help everyone get to the Washtenaw County Huron River Chain of Lakes website faster we have created a shortcut. You can now plug in into your search bar and it will take you right to the site.

www.Washtenaw.org/huroncol

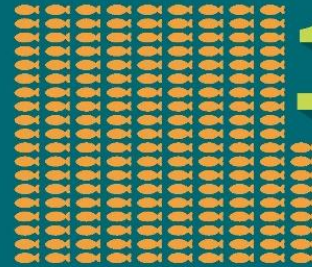
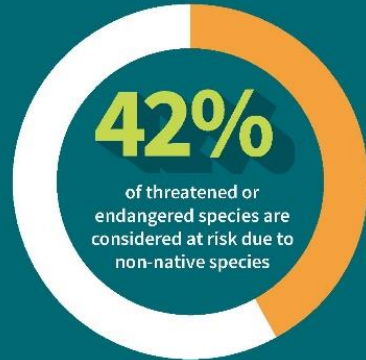
Additional Information:

PFAS: The “Do Not Eat” advisory on the Huron River starts when N. Wixom Road crosses in Oakland County and extends downstream to the mouth of the Huron River as it enters Lake Erie in Wayne County. For a full list of water-bodies please visit

<https://www.washtenaw.org/AlertCenter.aspx?AID=136>

Shoreland Steward Best Practices: Please visit the following site to learn more about the best practices for your shoreland!

<https://www.mishorelandstewards.org/bestpractices.asp>



180+

non-native aquatic organisms have colonized the Great Lakes since the 1800s

\$24 million per year

SPENT TO CONTROL AQUATIC PLANTS IN MICHIGAN, INCLUDING EURASIAN WATERMILFOIL

\$200 million per year

LOST BY THE GREAT LAKES REGION DUE TO THE EFFECTS OF SHIP-BORN INVASIVE SPECIES ON SPORT FISHING, COMMERCIAL FISHING, WILDLIFE WATCHING, AND RAW WATER USAGE

\$5.7 billion per year

AMOUNT OF TOTAL ECONOMIC IMPACT OF AQUATIC INVASIVE SPECIES IN THE GREAT LAKES REGION



Priceless

INSPECTING AND CLEANING YOUR BOAT AND EQUIPMENT TO PREVENT THE SPREAD OF AQUATIC INVASIVE SPECIES

REQUIRED ACTIONS – IT’S THE LAW IN MICHIGAN!



REMOVE

aquatic plants from boats, boating equipment, and boat trailers before launching or placing in the water.

(NREPA Part 413 Sec. 41325)



DRAIN

live wells, bilges and all water from boats before leaving the access site.

(MI DNR Fisheries Order 245)



DISPOSE

of unused bait in the trash. Do not release bait into the water.

(MI DNR Fisheries Order 245)



DON'T TRANSFER

fish to water bodies other than where they were caught.

(MI DNR Fisheries Order 245)

ADDITIONAL RECOMMENDED ACTIONS – PROTECT OUR NATURAL RESOURCES!

- Inspect and remove plants and mud from boats, trailers, and equipment before leaving the access area. Dispose of the material in a trash receptacle or otherwise away from the water body, if possible.
- Power wash boats and trailers before leaving the access site. Alternatively, use a nearby car wash or wash at home.
- Allow the boat to dry for at least 5 days before launching into a different body of water.
- Disinfect livewells and bilges with bleach solution (1/2 cup bleach to 5 gallons water).



For more information and to report sightings, visit: www.michigan.gov/invasives