

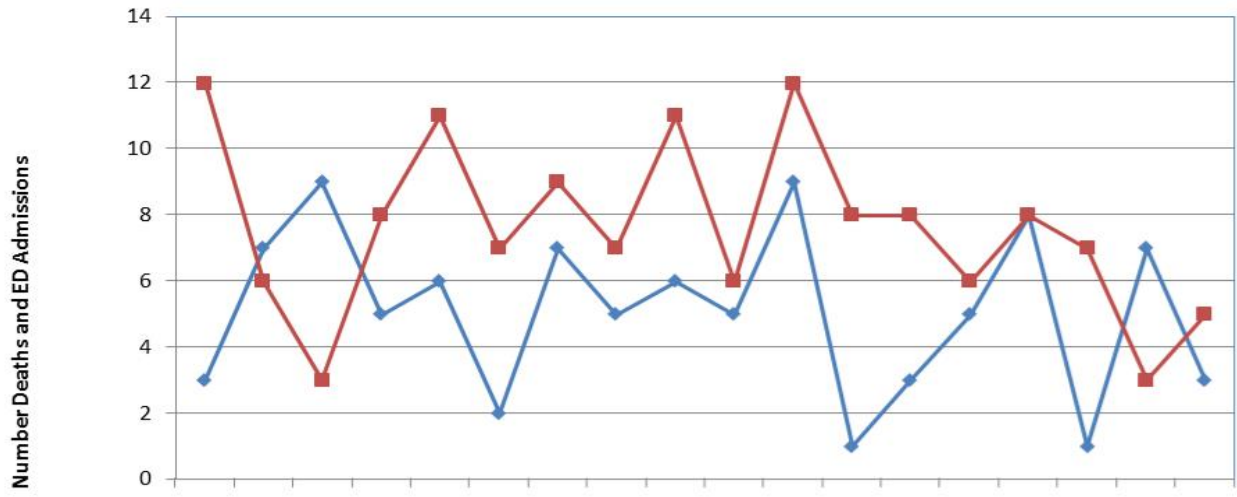
Washtenaw County Public Health Monthly Opioid Report

OPIOID RELATED OVERDOSES AND DEATHS of WASHTENAW COUNTY RESIDENTS

August 2015 Volume 1. No. 1.



**Emergency Department Admissions and Deaths Associated with Unintentional Opiate Overdoses
Washtenaw County Residents
January 2014 – June 2015**



	Jan-14	Feb-14	Mar-14	Apr-14	May-14	Jun-14	Jul-14	Aug-14	Sep-14	Oct-14	Nov-14	Dec-14	Jan-15	Feb-15	Mar-15	Apr-15	May-15	Jun-15
Deaths	3	7	9	5	6	2	7	5	6	5	9	1	3	5	8	1	7	3
ED Admissions	12	6	3	8	11	7	9	7	11	6	12	8	8	6	8	7	3	5

— Deaths — ED Admissions

Data provided by University of Michigan and Saint Joseph Mercy Hospitals. These numbers do not include persons who survived their overdose and refused or did not seek or receive medical care. Data provided by the Washtenaw County Medical Examiners Office. For questions, please Contact Adreanne Waller, MPH Epidemiologist at WallerA@ewashtenaw.org

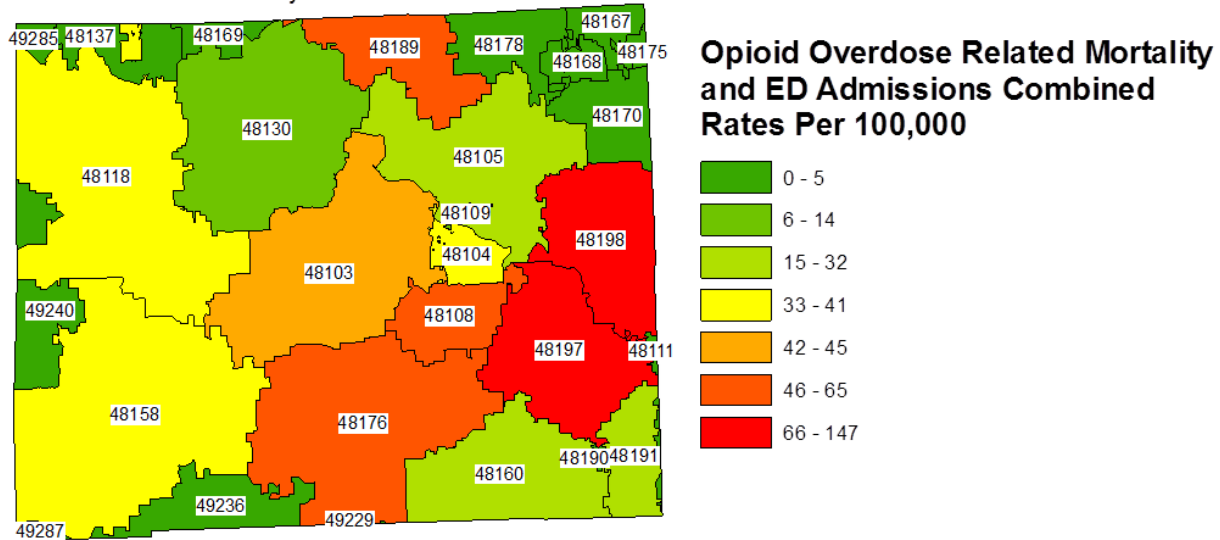
- **ED admission saves lives.** Nearly all Washtenaw County residents admitted to an emergency department for opioid related overdose survived their overdose. Many of these patients received Naloxone, an opioid overdose reversal drug. Each of these admissions represents an opportunity to prevent future overdoses.
- **Heroin is still #1.** Heroin was involved in approximately two thirds of opioid related deaths in this time frame.
- **Fentanyl, an opioid that is 50 to 100 times stronger than morphine, is involved** in approximately one quarter of opioid related, Washtenaw County residents' deaths in 2015. The average (median) age of those whose overdose involved Fentanyl was nearly ten years younger than opioid related deaths without Fentanyl involved.
- **Every Washtenaw County community is impacted.** All Washtenaw County zip codes have residents who have had a opioid related overdose during January 2014 to June of 2015.

CONTINUED ON PAGE 2 FOR OVERDOSES AND OVERDOSE RATES BY ZIP CODE

For more detailed trend data, see our '[WCPH Opioid and Heroin Overdose](#)' web page.



Unintentional Opioid Overdose Mortality* and Hospital Admission* Rates**
 Washtenaw County Residents
 Zip Code of Residence
 January 2014 - June 2015



Opioid Related Emergency Department Admissions,¹ Deaths² and Rates³
 Zip Code of Residence – Washtenaw County Residents
 January 2014 – June 2015

Zip Code	Emergency Department Admissions	Deaths	Deaths Plus Admissions	Rate per 100,000
48103	21	3	24	45
48104	4	10	14	37
48105	5	6	11	32
48107	1	1	2	8
48108	11	5	16	61
48118	5	0	5	40
48130	1	1	2	14
48158	3	0	3	41
48160	3	1	4	29
48168	0	1	1	5
48176	10	4	14	65
48189	6	2	8	58
48190	1	0	1	NA*
48191	1	0	1	25
48197	31	31	62	101
48198	34	22	56	147

*Population <200

¹ Data provided by University of Michigan and Saint Joseph Mercy Hospitals. These numbers do not include persons who survived their overdose and refused or did not seek or receive medical care.

² Data provided by the Washtenaw County Medical Examiner's Office.

³ Rates: Number of deaths plus overdose admissions per 100,000 population.

Please Contact Adreanne Waller, MPH – Epidemiologist at waller@ewashtenaw.org for questions

