

2008 Revenue Year to Date*

Investment Earnings	6,218,245
Delinquent Taxes & Fees	4,028,757
Accomodation Tax	1,475,988
Dog Licenses	29,807
Tax Searches	17,445
	<hr/>
	11,770,242

A Message from the County Treasurer

Economy in Trouble

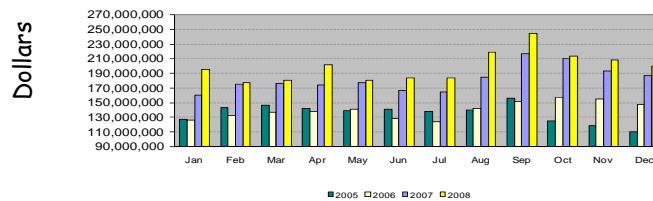
In 2008 home prices plunged, the value of retirement funds plummeted, and the credit markets collapsed. To recover public confidence in banking, the federal government insured money market funds and increased insurance coverage on bank deposits.

Safeguarding Public Funds

In this new economic environment, the Treasurer initiated investment changes. She maintained larger than normal money market investments that were insured. She invested in Certificates of Deposit, up to the insurance limit per bank, in all banks doing business in Washtenaw County that met qualifications for safety and offered competitive rates. This increased the County's investment from 3 local banks to 16 without any increased risk to the public. The new investment strategies enabled the Treasurer to safeguard funds, support local banks, and increase the County's return above the benchmark.

Portfolio Size

Historical Comparison By Month

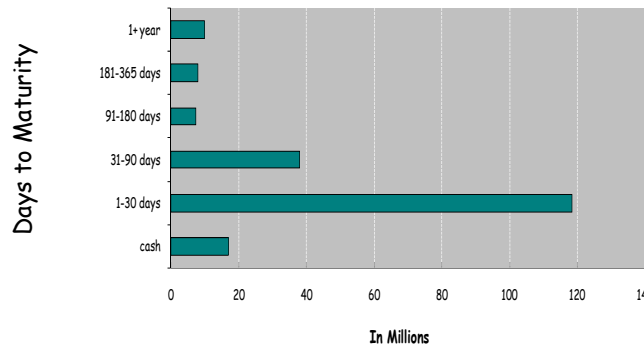


Current Portfolio Size

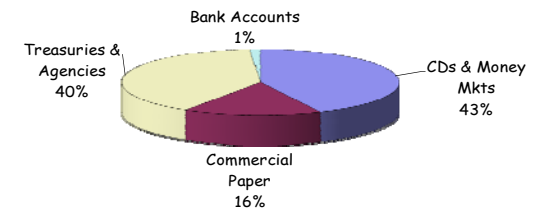
CDs & Money Mkts	\$85,346,543
Commercial Paper	32,000,000
Treasuries & Agencies	79,000,000
Bank Accounts	2,416,635
	<hr/>
	\$198,763,178

Diversification

Diversification By Maturity Date

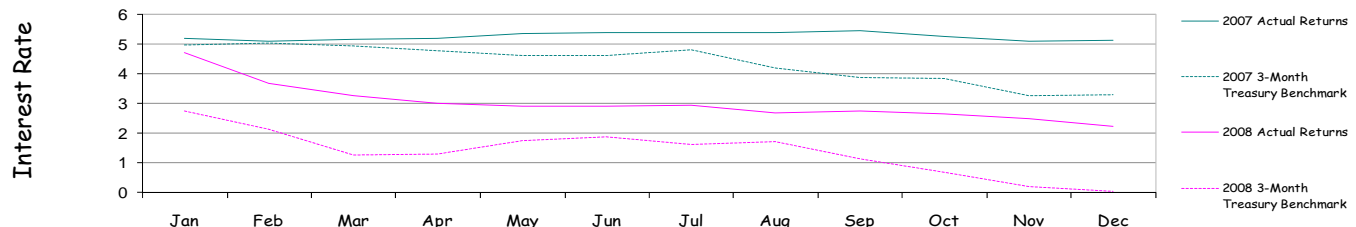


Diversification by Investment Type



Yield

Average Weighted Yield (Excludes Money Markets)



Safeguarding Public Funds



Fulfilling Customer Needs

*General Ledger/Subsidiary Ledger Information