



# Staying in the Loop

*Providing community-wide recognition and organizational-based technical assistance and education to businesses, schools, governmental agencies, and non-profit organizations that demonstrate leadership in waste reduction and recycling.*

Fall 2007

## Inside this issue:

Washtenaw County wins EPA Award	2
LEED-Certification: The Inside Scoop	2
America Recycles Day '07	3
Green Information Guide: Version 2	3
Environmental Excellence Awards Ceremony 2007	3
Waste Knot Partners of 2007	4

Contact the Washtenaw County Solid Waste Program at: (734) 222-6874  
Or visit us online at: <http://recycle.ewashtenaw.org>

### Green Features Implemented by A3C:

- Geothermal Heating and Cooling System
- Countertops, tabletops, and flooring made of a variety of recycled and recyclable materials
- A natural ventilation system using solar chimneys for improved indoor air quality
- Sky lights for natural light and fluorescent lighting operated by sensors
- Green roof and irrigation system
- Recycling of construction materials



## Waste Knot Partner Spotlight: A3C Collaborative Architecture

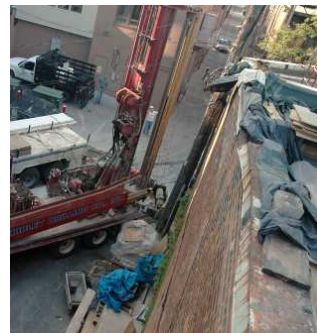
If you're thinking about LEED certified designs or renovations, look no further than Ann Arbor Architects Collaborative, known more commonly as A3C. They are a local architecture and interior design firm located in downtown Ann Arbor. Multidisciplinary in nature, they focus on projects in healthcare, education, finance, and corporation.

We're highlighting them as our spotlight this fall because they are currently undergoing a major green renovation of their building. A3C chose an environmentally sustainable approach to their remodeling for the numerous gains it supplies. Not only do many of the sustainable products and systems implemented meet LEED Gold Certification standards, but they also improve the internal building environment for the employees working there, as well as helping save the company money over time.



For being the first building in downtown Ann Arbor to be registered with the U.S. Green

Building Council and earning LEED-CI Gold Certification standards, A3C was awarded the Environmental Excellence Award honorable mention under the Waste Reduction category (See page 3). They recycled as much of their old materials as possible and chose to install many new materials that are easily recyclable and rapidly renewable such as cork and bamboo used in the flooring.



Another green feature is the installation of a geothermal heating and cooling system that replaces the old fiber ducts, effectively increasing energy efficiency through a closed loop system while decreasing energy costs.

A3C has set themselves up as a model for education and advocacy. Clients will have the opportunity to observe all of the LEED certified features when visiting the building to entertain ideas for their own implementation. Also, one of the most spectacular new design features will be found on the roof where they are constructing an "Urban Retreat" to be used by local government and non-

profit organizations. There will



be a conference room that overlooks a 3,700 sq. ft. green roof supporting an astonishing five ecosystems. They plan to water the roof using a catchment system that recycles rainwater. It is important to them to display how beyond environmental and economic benefits, green renovating is also aesthetically appealing.

A3C has also completed 11 other LEED certified projects in Michigan, so if you're looking to renovate your building or design a new one, don't forget to refer to A3C!



We encourage you to visit A3C's building and see their accomplishments,

210 East Huron Street  
Ann Arbor, MI 48104

Or check out their website at [www.a3c.com](http://www.a3c.com)

## Washtenaw County Receives Prestigious EPA Award



After reviewing numerous competitive applications, the U.S. Environmental Protection Agency has selected Washtenaw County Solid Waste Program as a *Gold Achievement – Community Involvement* winner! The EPA will honor Washtenaw County for their exceptional achievements at the *2007 WasteWise & NPEP Conference: Building Community and Business Partnership*. The award will be formally pre-

sented in Washington DC on November 15<sup>th</sup>, 2007. Previous winners of this award include: The Walt Disney Company and The Mahoning County Commissioners' Reuse and Recycling Division.

Washtenaw County will be featured in the WasteWise Annual Report as an award winner. The Annual Report, along with previous years' reports, is posted on the WasteWise website and can be viewed at: [www.epa.gov/wastewise/pubs.htm](http://www.epa.gov/wastewise/pubs.htm).

The Waste Knot Program is a prime example of Washtenaw County bringing our community together to collaboratively reduce waste. Waste Knot partners have demonstrated leadership in waste reduction and recycling to protect our environment.

Washtenaw County would like to wholeheartedly thank all our partners for their dedication to the Waste Knot Program and their commitment to the cause! We could not have done it without your participation!

### LEED Qualifications

The LEED rating system offers four certification levels for new construction

- ◆ Certified
- ◆ Silver
- ◆ Gold
- ◆ Platinum

that correspond to the number of credits accrued in five green design categories:

- sustainable sites
- water efficiency
- energy and atmosphere
- materials and resources
- indoor environmental quality

## LEED-Certification: What it's all about

Leadership in Energy and Environmental Design, or LEED, certification is the official Green Building rating system. It was developed by the U.S. Green Building Council in 1998. The council has set a system of standards for sustainable environmental construction. There are now LEED certified projects in all 50 U.S. states, as well as 30 other countries throughout the world, totaling over 14,000 projects. As a program, LEED was conceived to:

- Define "green building" by establishing a common standard of measurement
- Promote integrated, whole-building design practices
- Recognize environmental leadership in the building industry
- Stimulate green competition
- Raise consumer awareness of green building benefits
- Transform the building market

LEED has been devised as a comprehensive program that covers all aspects of the development and construction process, rating several main areas: sustainable sites, water efficiency, energy and atmosphere, materials and resources, indoor environmental quality, and innovation and design process. The LEED system provides for a varying set of classification levels, each complete with their own set of standard prerequisites and credits. After submitting an application to the Green Building Council detailing a project's compliance with the rating system, the project may be granted a certain number of credits that places it at the certified, silver, gold, or platinum level.

LEED has become a popular designation of environmentally sustainable standards in construction in America and its use continues to grow. Though it is constantly being modified by its members, the system does have a few issues to speak of. It is criticized for not being specific to projects in differing environments or climates. For example, water certification standards are the same for Michigan as they are for Arizona, even though water is of much greater concern in the arid climate of Arizona, thus warranting a specific credit for either site. Also, there is the complaint that certification costs money which could otherwise be used to make a project even more sustainable.



The benefits far out way the costs, though, as LEED-certified buildings have reduced operating costs, created healthier and more productive occupants, and conserve our natural resources.

For more information please visit the U.S. Green Building Council at <http://www.usgbc.org/>



**AMERICA RECYCLES**  
It All Comes Back To You.

# America Recycles Day 2007

This year marks the eleventh anniversary of America Recycles Day – a national event held to promote the importance of recycling. The theme of this year’s campaign is *It All Comes Back to You*. The slogan presents multiple messages: a recycled product or material can return to consumers as another new product; recycling comes back to consumers as an improved environment, preservation of resources and economic well-being of the country; and it is everyone’s responsibility to recycle.

Washtenaw County is doing its part to promote America Recycles Day. On November 8, from 4:30 pm – 8:00 pm the Washtenaw County Department of Planning and Envi-

ronment will be hosting its fourth annual Washtenaw County Recycles Day Celebration. The event will be held at Leopold Bros. Brewery. This is not only an opportunity to celebrate recycling, but also the Waste Knot Program and its partners.

Washtenaw County boasts over 225 Waste Knot partners, or local businesses, schools, non-profits and governmental agencies that have demonstrated leadership in waste reduction, recycling and closing the loop. This year’s Washtenaw County Recycles Day Celebration is intended to provide a welcoming venue for networking opportunities among partners, as well as to educate the public on the environmental and community leadership Waste Knot partners make a top priority, encouraging citizens to support these local businesses. This event is free and will include

delicious complimentary food, raffle prizes, educational displays, and a tour of the brewery. In keeping with the theme of America Recycles Day, we will be raffling off fleece jackets made with 87% recycled material as one of our prizes. Attendees may fill out an America Recycles Day pledge card at the event which automatically enters them into a nationwide raffle to win a seven night Alaskan cruise!

Come celebrate recycling and the Waste Knot program at America Recycles Day 2007!

**Event Info:**

**Date:** Thursday Nov. 8<sup>th</sup>

**Time:** 4:30pm - 8pm

**Location:** Leopold Bros. Brewery, located at 523 South Main St, Ann Arbor

**Winter Energy Saving Tips**

With the frigid winter weather rapidly approaching, there are several ways to reduce your energy consumption:

- Make sure outdoor portions of your heating system are not blocked by leaves, shrubbery, or other objects.
- Install rubber gaskets behind outlets and switch plates on exterior walls.
- Ceiling fans keep you comfortable in the winter too! Reversing the direction of the blades pushes warm air down into the room.
- Lower your water heater temperature to 120 degrees. For added savings, have your water heater wrapped with an insulation blanket by your Heating/Plumbing Contractor.



## Green Information Guide: Version 2 - Coming in November

Washtenaw County Department of Planning and Environment, together with the Washtenaw County Consortium for Solid Waste Management (WCCSWM), are releasing the second version of the Green Info Guide: A Toolbox for Environmental Best Practices in Washtenaw County. It was created in collaboration with Debra Power of Power Marketing, one of our very own Waste Knot partners!



Newly updated features include two new categories: **Lakes Management** and **Think Local, Act Local** featuring proper riparian management resources and opportunities for closing the loop between production and consumption within our community, helping to conserve and keep resources within Washtenaw County.

Our seven already existing categories include:

- Municipalities and Universities*
- Solid Waste and Recycling Management*
- School and Educational Resources*
- Businesses and Waste Reduction*
- Yard Waste and Lawn Care*
- Household Hazardous Waste*
- Energy Efficiency*

This informational CD will continue to be available to all residents, business owners and government agencies of Washtenaw County interested in responsibly reducing, reusing and recycling among other environmentally beneficial practices.

## Environmental Excellence Awards Ceremony 2007

Congratulations to the recipients of the 2007 Environmental Excellence Awards:

**Overall Winner:** Whitmore Lake High School

*Waste Reduction Category*

- Winner- Habitat for Humanity
- Honorable Mention- A3C (Ann Arbor Architects Collaborative)
- HM- Heritage School of Saline

*Pollution Prevention Category*

- Winner- Pittsfield Charter Twp
- HM-Dexter Village Road Maintenance Facility

*Water Quality Protection Category*

- Overall- Pittsfield Charter Twp
- HM- Dexter Village Road Maintenance Facility
- HM- SEVA

Washtenaw County recognized the winners for their achievements in a ceremony held on Oct. 3rd. Winners were chosen by members of the Washtenaw County Department of Planning and Environment and the Drain Commissioner’s Office. The newly completed Whitmore Lake High School was chosen for meeting LEED certification standards.

**Overall Winner**



Whitmore Lake High School



# Congratulations to all Waste Knot Partners



## Waste Knot

### Program Updates:

Keep us updated on your waste reduction and recycling practices—we want to know what you are doing!

The more you reduce, reuse, and recycle, the more \$\$\$ you save.

Let co-workers know that they are a part of the Waste Knot Program—post this newsletter and flyer insert in places where everyone can read them.

Would you like to be featured in a future issue of Staying in the Loop? Let us know!

Please Call:

734-222-6874

### Architecture Partners

Ann Arbor Architects Collaborative  
David W. Osler Associates, Inc.  
Hobbs & Black Associates, Inc.  
Mitchell and Mout Architects, Inc.  
Quinn Evans I Architects

### Auto Repair and Maintenance Partners

C & T Collision, Inc.  
City Body  
Jamie's Lakewood Auto  
Robert's Paint and Body, Inc.  
Thorton's All Star Auto Salvage

### Business Service Partners

Benquin Business Systems  
Dominant Systems Corporation  
Domino's Farms Corporation  
Dynamic Edge, Inc.  
Forefront Corporation  
Phire Branding Company  
Power Marketing  
Secure ECO Shred

### Chambers of Commerce Partners

Ann Arbor Chamber of Commerce  
Ypsilanti Chamber of Commerce

### Cleaning and Janitorial Service Partners

Coach's Catastrophe Cleaning Services  
Unibar Maintenance Services, Inc.

### Construction and Demolition Partners

Calver's Roll-off Containers, Inc.  
Cardea Construction  
Carpenterguy  
Homeowner Services of America, Inc.  
JC Beal Construction, Inc.  
TDF II Hauling & Plowing

### Engineering Partners

Barr Engineering Company  
Black & Veatch  
Cybernet Systems Corporation

### Finance Partners

Bowen & Barber, LLC  
Carol L. Hoffer, CLU  
Edward Jones Investments  
Oliver Financial Planning  
Swisher Commercial

### Government Partners

Ann Arbor City Hall  
Ann Arbor District Library  
Ann Arbor Farmers Market  
Ann Arbor Natural Area Preservation  
Chelsea District Library  
City of Chelsea  
Federal Correctional Institution, Milan  
Freedom Township  
Great Lakes Science Center  
Leslie Science Center  
Pittsfield Charter Township  
Saline District Library  
Village of Dexter  
Washtenaw County Conservation District  
Western Washtenaw Recycling Authority  
Ypsilanti Community Utilities Authority

### Grocery Partners

People's Food Cooperative and Café Verde  
Ypsilanti Food Cooperative and River Street Bakery

### Health Service Partners

Arbor Psychological Consultants, P.C.  
Barbara Boyk, PhD  
Kleanthous Family Foot Clinic, P.C.  
Linda Diane Feldt, RPP, NCTMB  
Marsha Traxler, RN, RPP  
Quest Martial Arts  
St. Joseph Mercy Hospital  
Sun and Moon Yoga Studio  
University of Michigan Hospitals and Health Centers  
Yoga Shala

### Landscape Design and Planning Partners

Heart & Soul Services  
Johnson Hill Land Ethics Studio

Lodi Farms LTD  
Nature and Nurture, LLC  
Smith Group JJR

### Law Firm and Attorney Partners

John D. Erdevig, Attorney at Law  
Law Office of Helen Conklin Vick  
Legal Services of South Central Michigan  
Manchester & Associates, Attorneys at Law

### Manufacturing Partners

Automotive Components Holdings, LLC Saline Plant  
Automotive Components Holdings, LLC Spring St. Plant  
Barrett Paving Materials  
Chelsea Milling Company  
Data Optics, Inc.  
Elastzell Corporation of America  
Essen Instruments, Inc.  
Ford Motor Company Rawsonville Plant  
Horiba Instruments  
JAC Products, Inc.  
Kaiser Optical Systems, Inc.  
Liebherr Gear Technology  
Malloy, Inc.  
McNaughton & Gunn, Inc.  
Mikan Corporation  
NSK Corporation  
NuStep, Inc.  
SoloHill Engineering, Inc.  
Thomson-Shore  
Toner Supply ISO90001 Certified

### Non-Profit Partners

American Cancer Society Huron Valley Service Center  
Ann Arbor Area Convention & Visitor's Bureau  
Ann Arbor Hands-On Museum  
Clean Water Action  
Colonial Square Cooperative  
The Conscientious Cruiser  
Ecology Center  
First Unitarian Universalist Church  
Food Gatherers  
Frontline Church  
Growing Hope  
Habitat for Humanity of Huron Valley  
High/Scope Educational Research Foundation  
Legal Services of South Central Michigan  
Michigan Peaceworks  
National Kidney Foundation of Michigan  
NEW Center – Nonprofit Enterprise at Work  
NSF International  
Performance Network  
Recycle Ann Arbor  
The Scrap Box  
Washtenaw Land Trust  
The Women's Center of America

### Printing Service Partners

Advance Print & Graphics  
Goetzcraft Printers, Inc.  
Harrington's Standard Printing  
Print-Tech

### Realty and Housing Community Partners

Ann Arbor Board of Realtors  
Colonial Square Cooperative  
Trillium Real Estate  
Village Cooperative Homes, Inc.

### Research and Development Partners

Assay Designs, Inc.  
Pfizer Global Research and Development  
Subaru Research and Development

### Restaurant Partners

Arbor Brewing Company  
Dominick's  
Leopold Brothers Brewery  
Northside Grill  
Seva  
Sweetwaters Café  
Zingerman's Delicatessen

### Retail and Wholesale Partners

Acme Mercantile  
Arrow Awards  
Batteries Plus  
Borders Group Inc./Corporate Office  
Cartridge World Ann Arbor  
The Chelsea Collection  
Dixboro General Store  
Dragons Lair Futon  
Eckland Imaging & Design  
Forma Fine Crafts  
Generations  
G.E. Wacker, Inc.  
King's Keyboard House  
Maggie's Organics/Clean Clothes, Inc.  
Materials Unlimited  
Miles of Golf  
ReCellular, Inc.  
Saline Picture Frame Company  
Shaman Drum Bookshop  
Signs by Tomorrow

### School Partners

Ann Arbor Learning Community  
Forsythe Middle School  
Heritage Elementary School  
Lincoln Consolidated High School  
Rudolf Steiner School  
St. Francis of Assisi Catholic Parish and School  
The University of Michigan  
Washtenaw County Community College

### Service Partners

1-800-GOT-JUNK?  
Ann Arbor News  
Ann Arbor Transportation Authority  
Arbor Springs Water Company, Inc.  
Babel Latina, Inc.  
Bessenberg Bindery  
Betty Brigade  
Cartridges for Kids  
Current Magazine/SGI Publications  
David Meyer Photography  
Design My Wedding  
DTE Energy  
Electronics Service Center, Inc.  
Georgetown Country Club  
Iris Waste Diversion Specialists, LLC  
Master Tech Appliance Service, Inc.  
Organizational Designs, Inc.  
Palmer Insurance  
RJ Frank, Home Inspections  
Salon Vertigo  
SelectRide, Inc.  
Simply Organized Life  
Sustainable Systems, Inc. & Sustainable Spaces  
TeL Systems/Thalner Electronic Laboratories, Inc.  
Weber's Inn  
Shipping Service Partners  
Parcel Plus, UPS Store  
Software, Web, and Graphic Design Partners  
Cimulus, Inc.  
Harris & Baseview  
InPrint, Inc.  
Materialise  
West Pole, Inc.

### **\*\*\*And please welcome our newest members\*\*\***

Abbott's Landscape Nursery  
Advance Print and Graphics  
Ann Arbor Environmental Services  
Barrett Paving Materials  
Borders Books Cooperative HQ / A2  
H & R Block / Saline  
Infrared Energy Analysis, LLC  
Living Space, Inc.  
Mama Chandi  
Mechanical Energy Systems  
Tree of Life Cultural Arts  
Vintage Performance Auto Sales  
Washtenaw Woodwrights, Inc.  
Whitmore Lake High School  
Women in the Shoe  
Women Progressive Activists